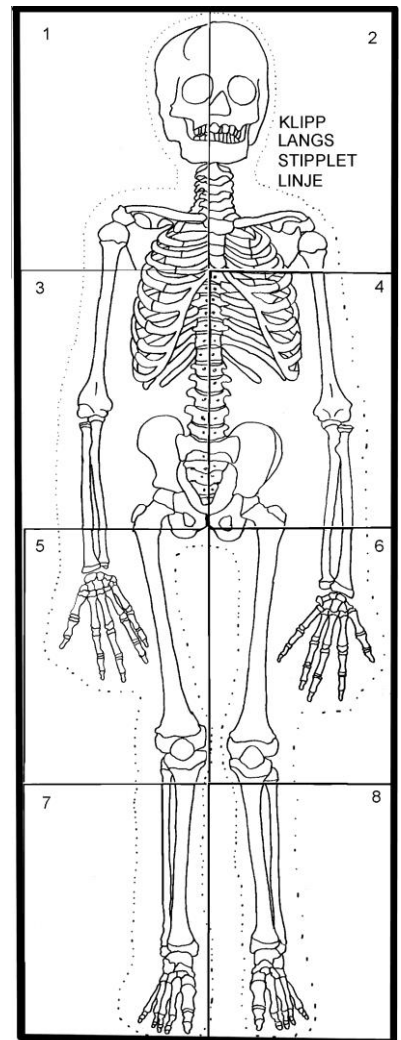


Skjelettet Hermansen

- ✦ Print ut alle de åtte A4 arkene. Klipp vekk overskytende papir. Inntil der skjelettet er delt og ca 1 cm rundt ytterkantene ellers.
- ✦ Legg arkene i riktig rekkefølge og få tegningene til å passe sammen. Tape skjelettet sammen på baksiden.
- ✦ Heng skjelettet opp i klasserommet.
- ✦ Sett navnelappene på riktig del



Hodeskallen

Skinnbein

Kragebein

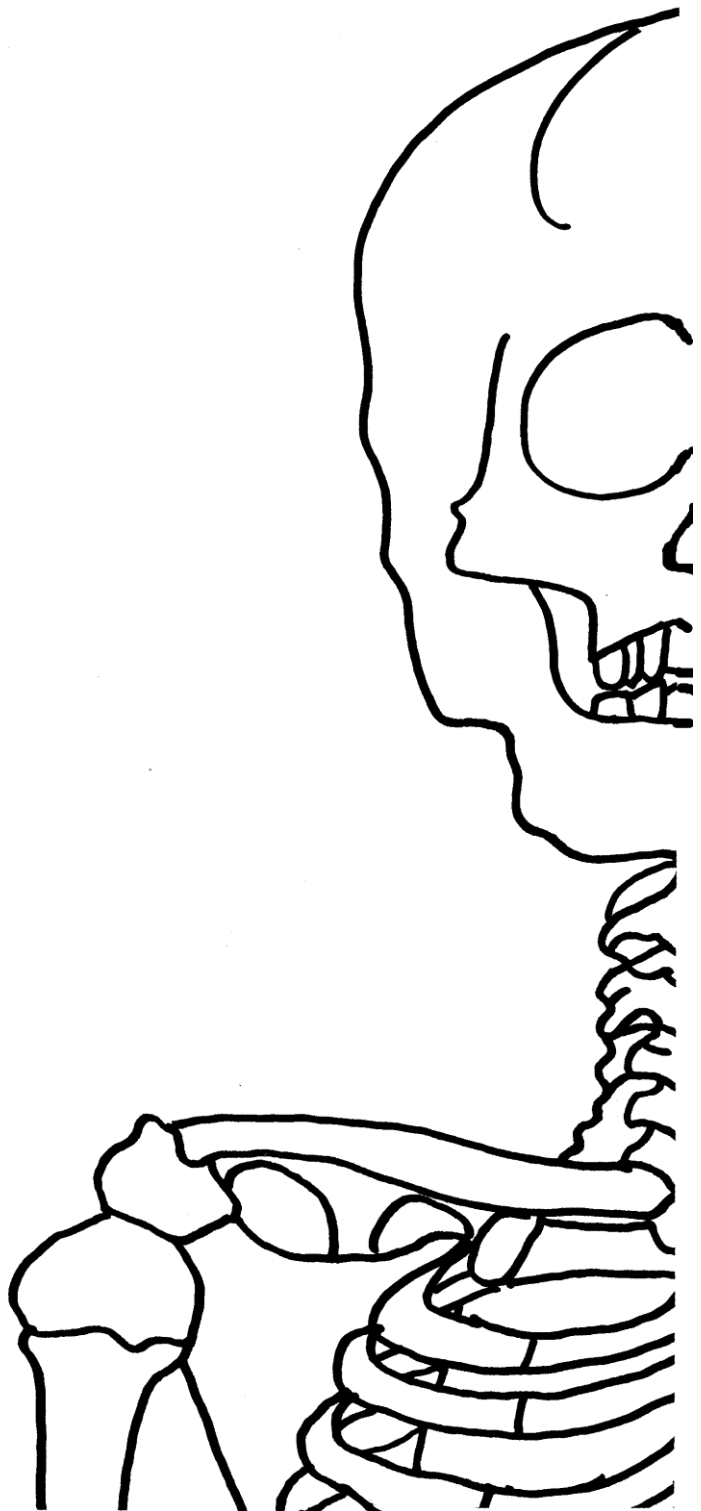
Lårbein

Albuebein

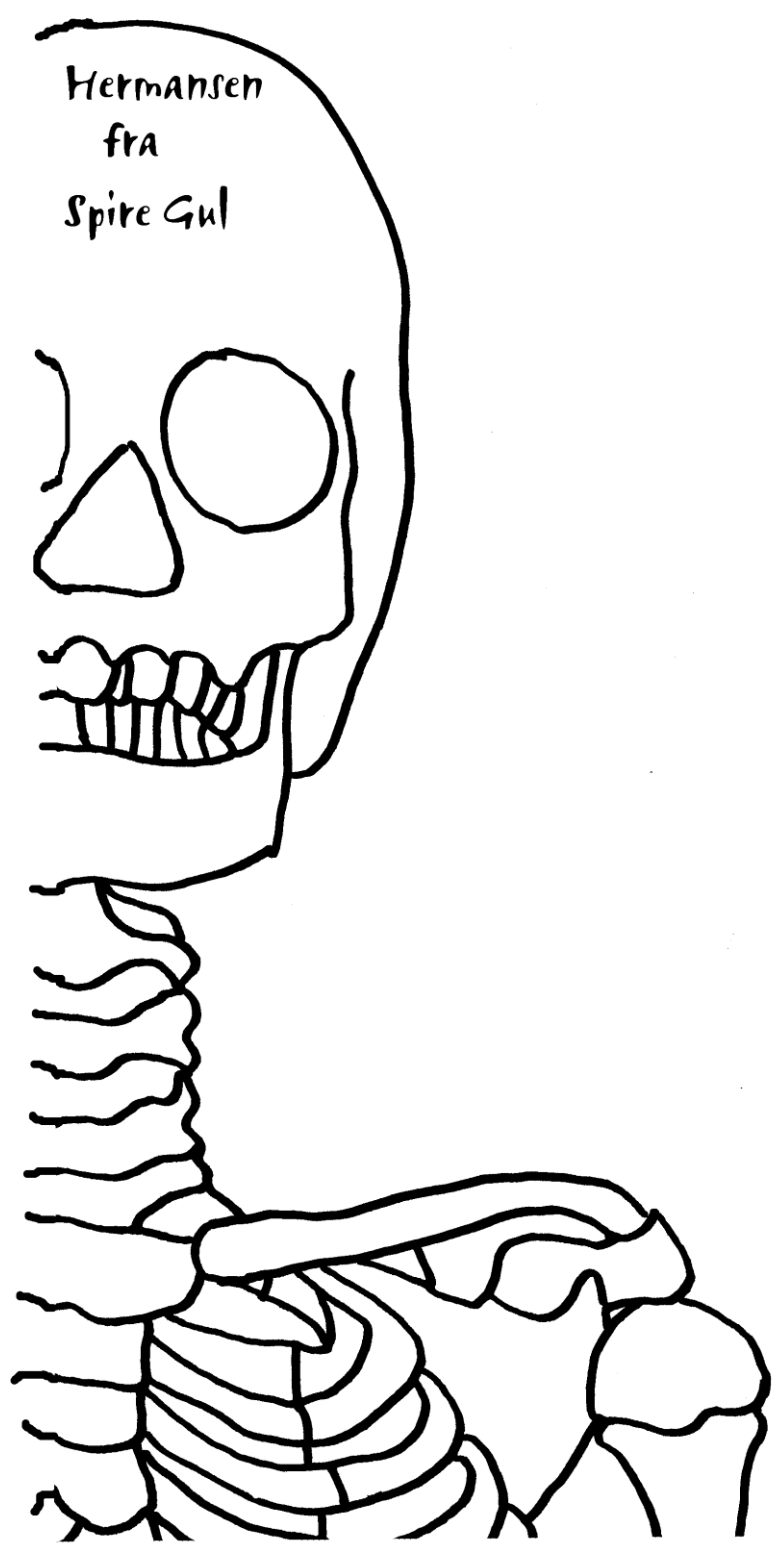
Spolebein

Leggbein

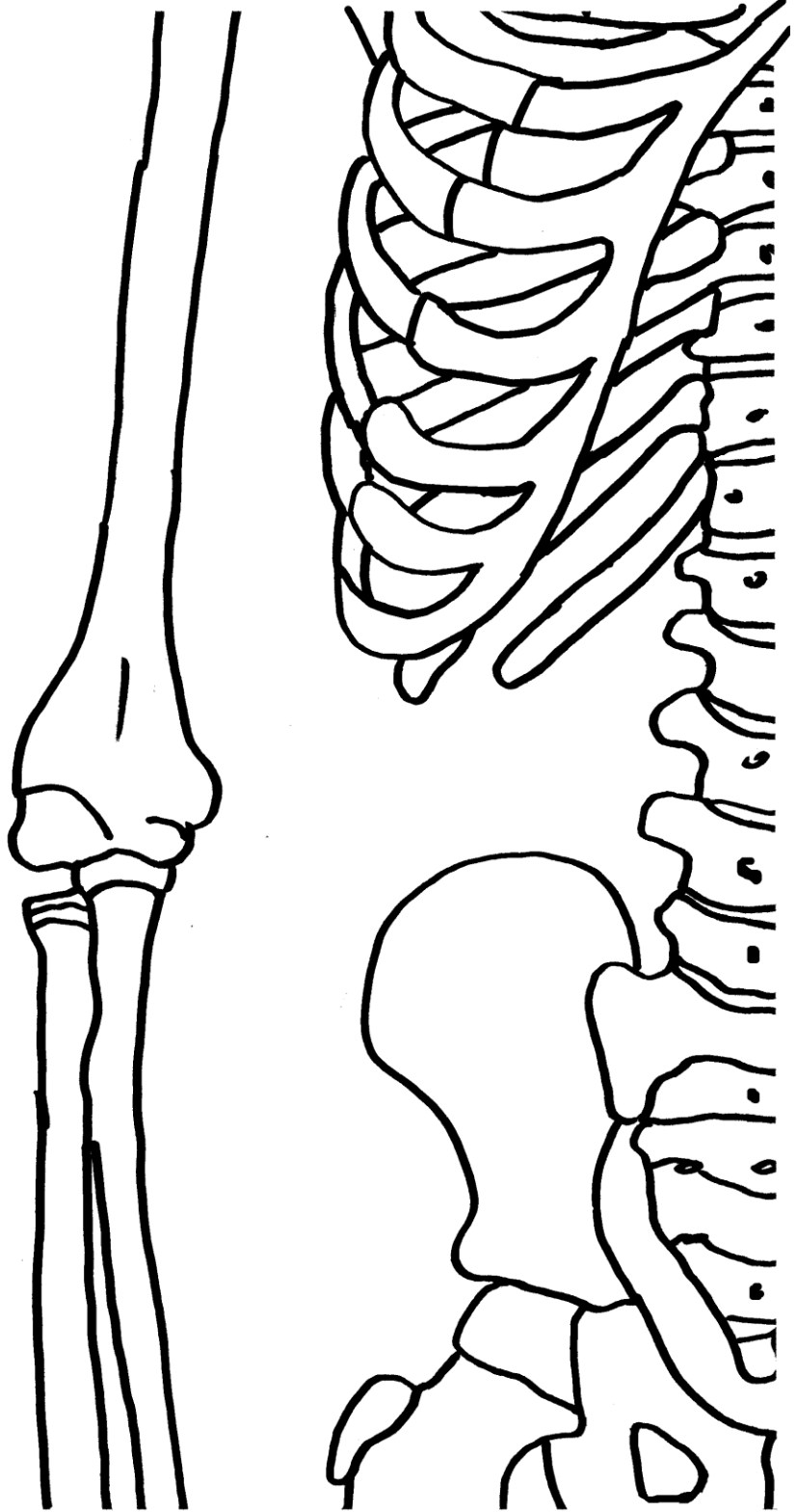
Ribbein



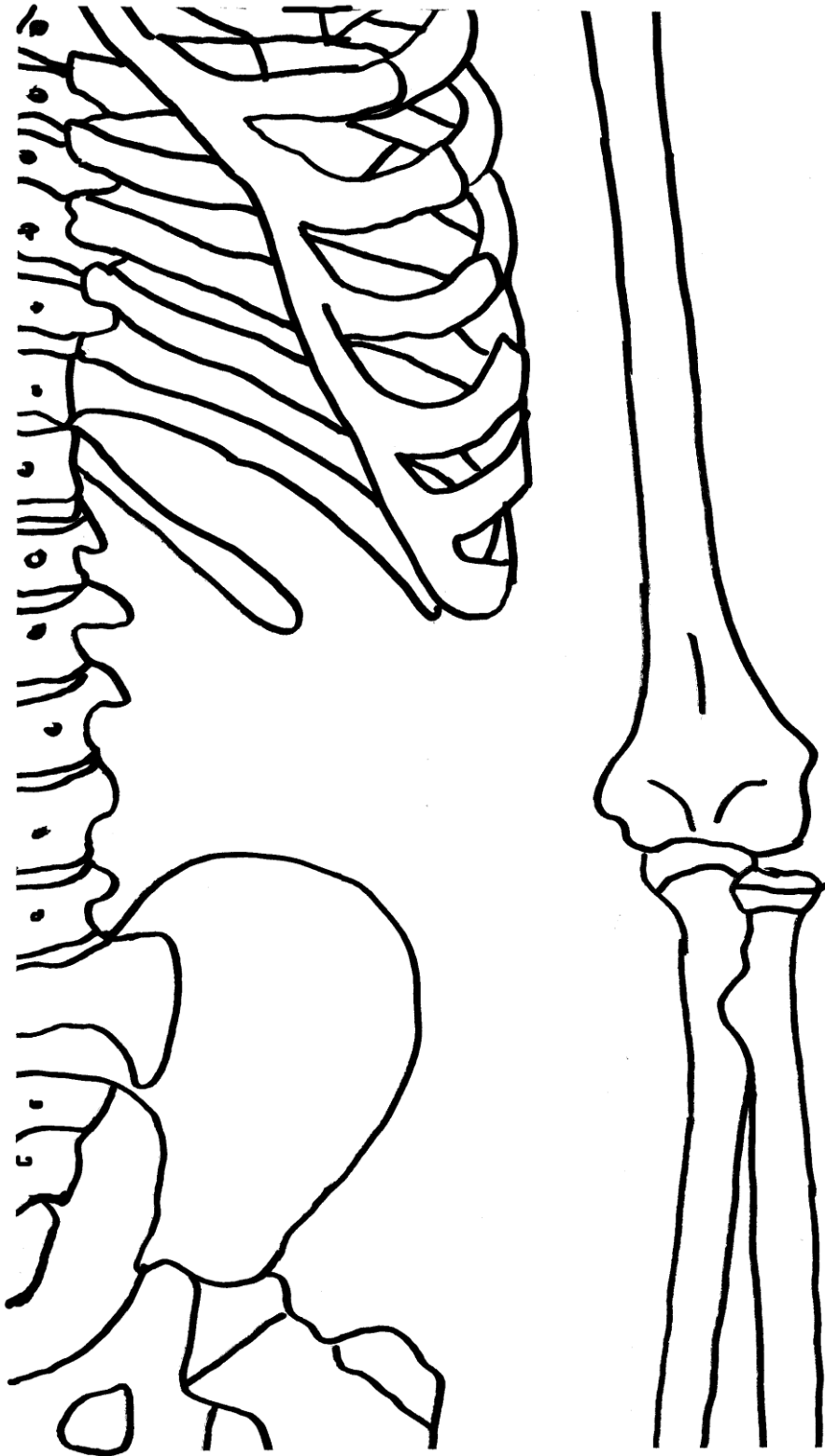
Spire Gul



Spire Gul

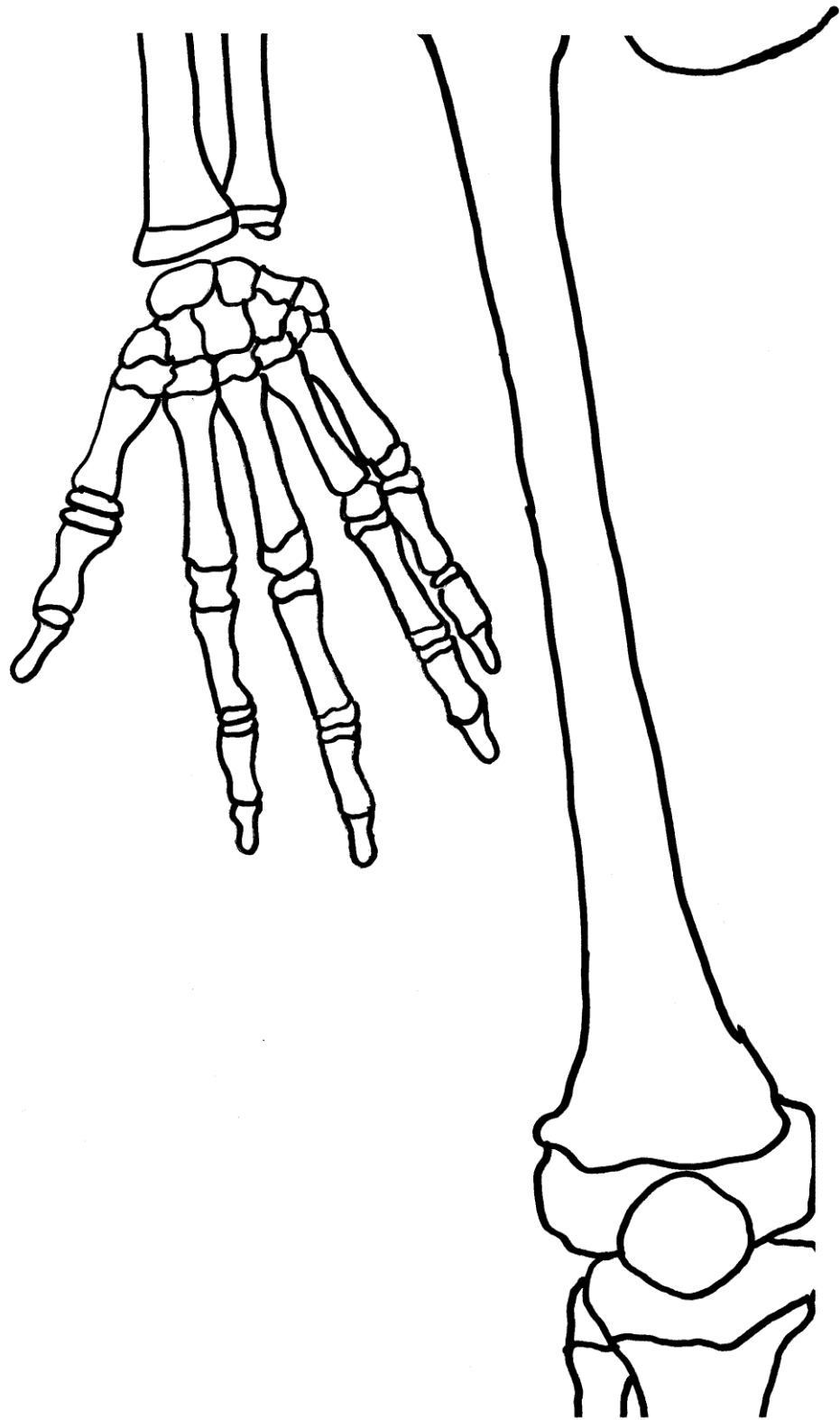


Spire Gul

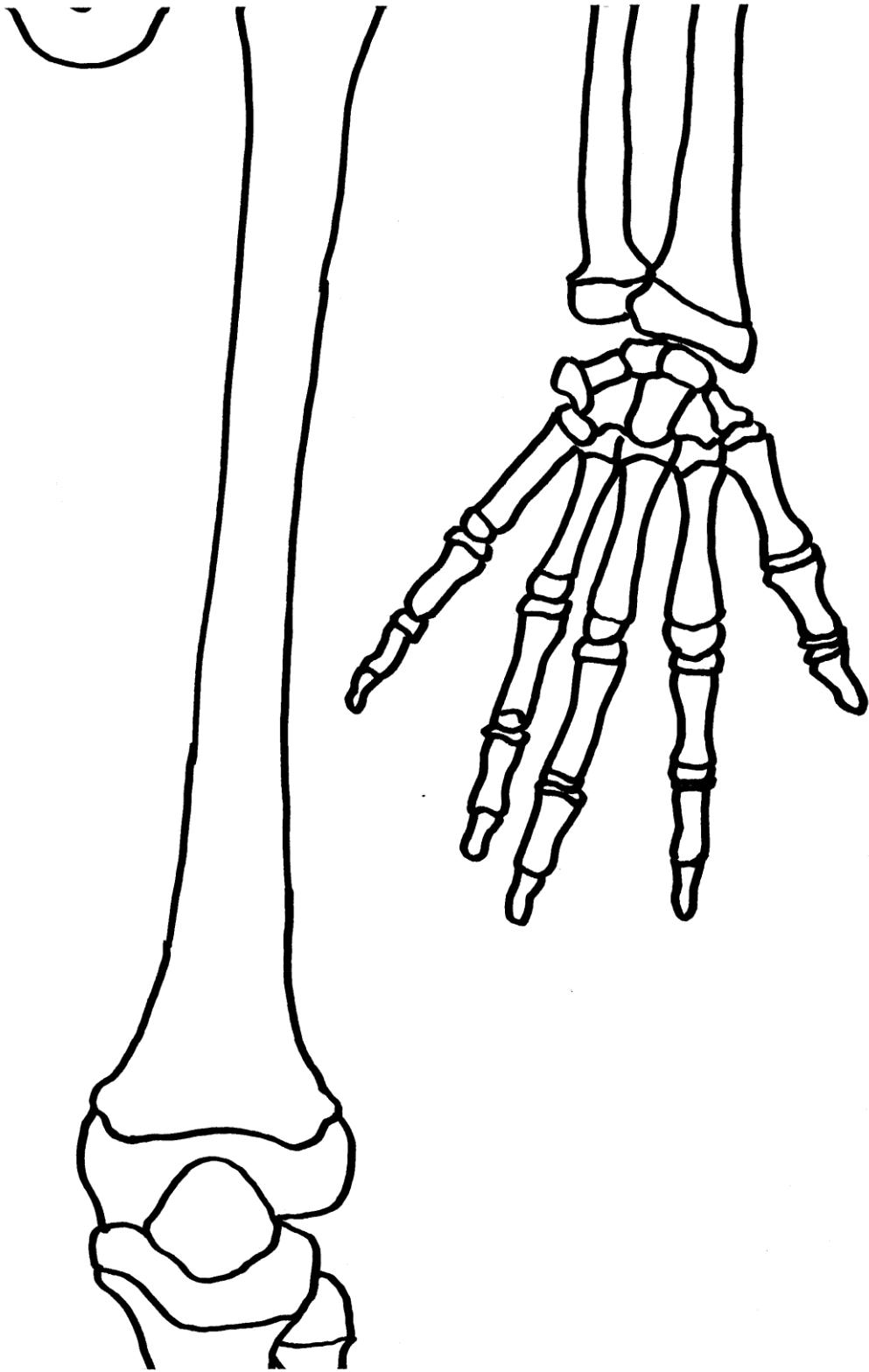


Spire Gul

5



Spire Gul







Spire Gul