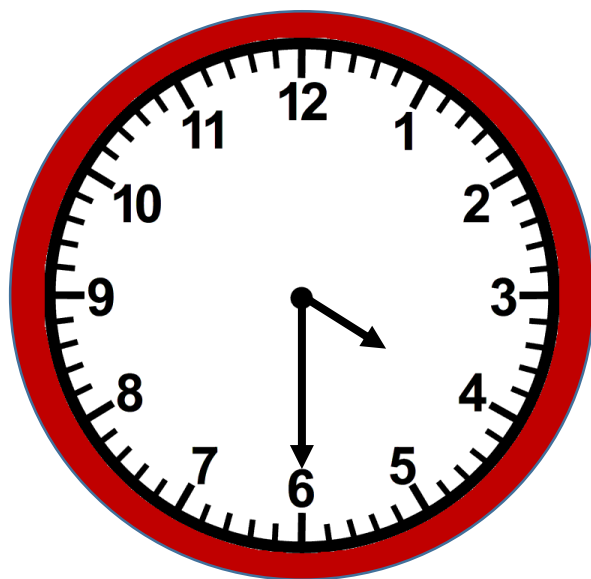


Diverse klokkeoppgaver



Navn:

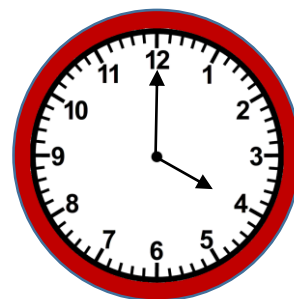
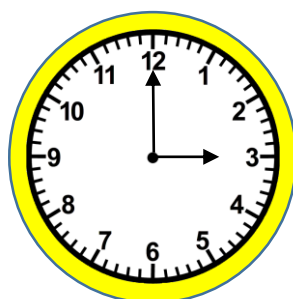
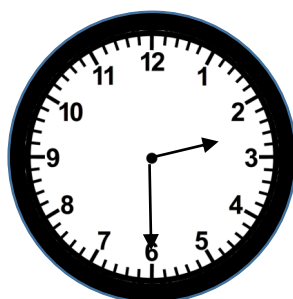
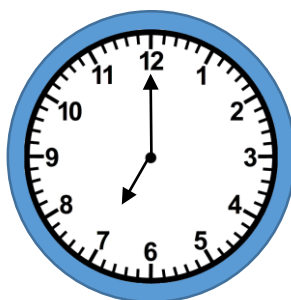
Per, Pål og Kari begynte på jobb hver dag kl. 07:00.

Per jobbet i 8 timer.

Pål jobbet i 9 timer.

Kari fikk alltid lov til å gå 30 minutter før Per.

Når gikk de hjem?



Hvem jobbet færrest timer?

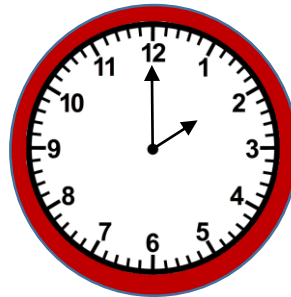
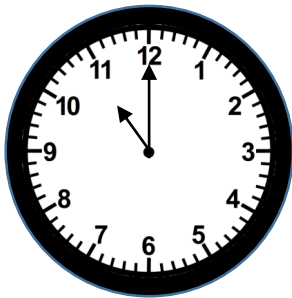
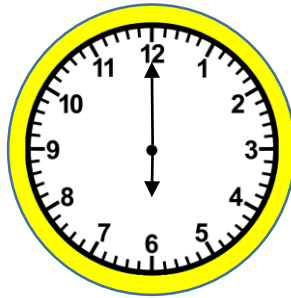
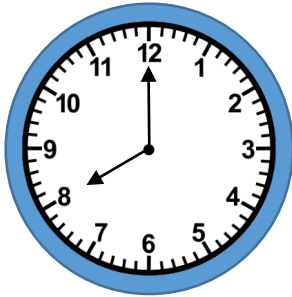
Kari sto opp kl. 08:00 på lørdag den 18.januar.

I dag skulle hun i bursdag til Bente kl. 14:00.

De hadde planlagt å gå på kino kl. 18:00

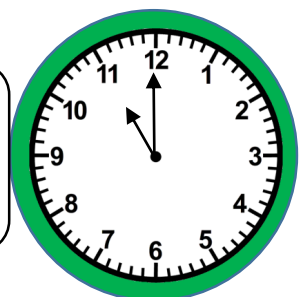
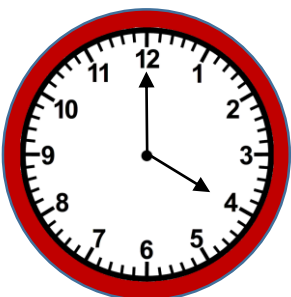
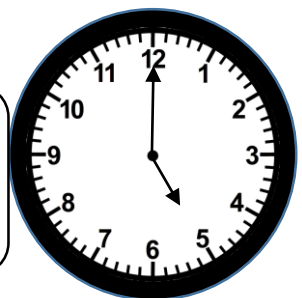
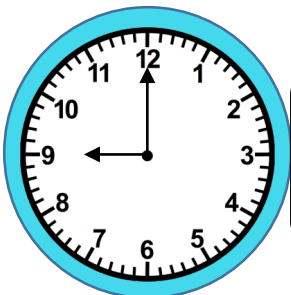
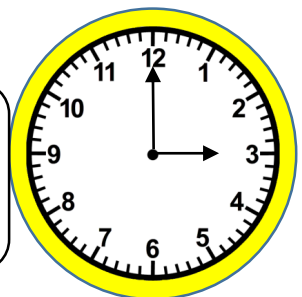
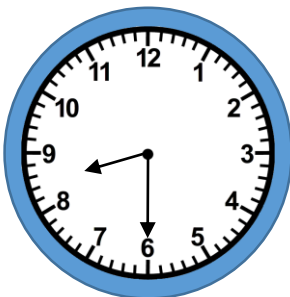
Hun hadde en avtale hos frisøren 3 timer etter at hun sto opp.

Sett inn riktig aktivitet under hver klokke



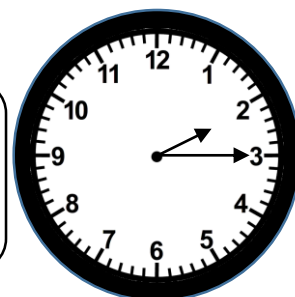
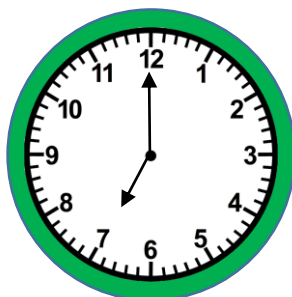
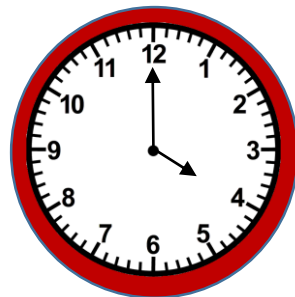
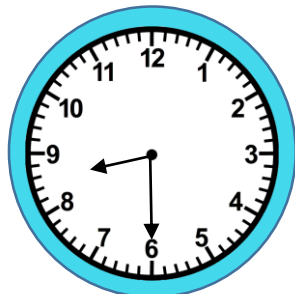
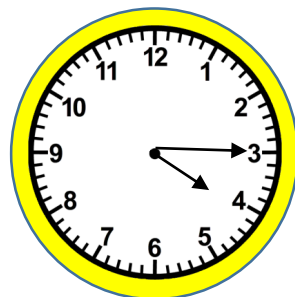
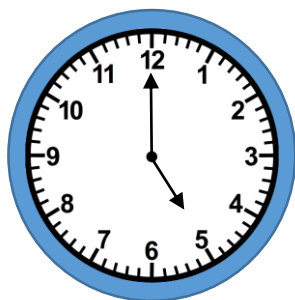
6 elever i klasse 4a var innkalt til tannlegen fredag 13. februar.
Først ut var Ole som hadde time allerede kl. 08:30.
En halvtime senere var det Per sin tur.
2 timer etter det kom Jens.
Kari hadde time 6 timer etter Per.
Anne fikk time 60 minutter etter Kari.
Jonas var sistemann kl. 17:00

Sett inn navn ved riktig klokkeslett



Lise går på turn. Hun trener hver dag. I helgen er hun ofte på stevne. På mandag begynner treningen kl. 16.00
Tirsdags-treningen begynner en time senere enn mandag.
På onsdag starter de kl. 19.00
Torsdag starter et kvarter senere enn mandag.
På fredag går hun rett ned til hallen etter skolen. Hun slutter kl. 14.00 og rekker det akkurat.

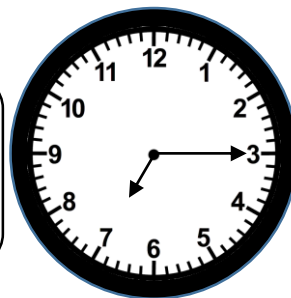
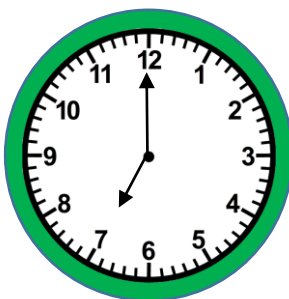
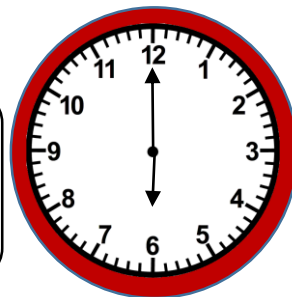
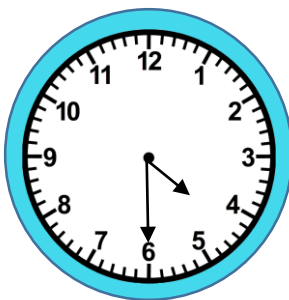
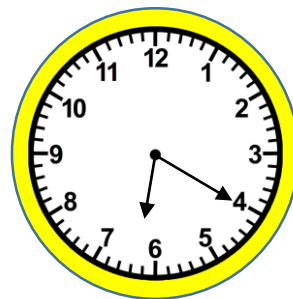
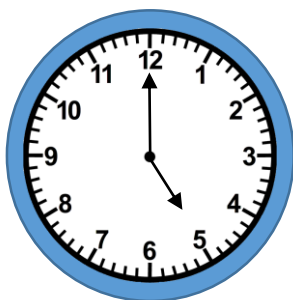
Sett inn riktig dag ved klokkeslettet



Mamma og Håkon skal på kino. Det er mange filmer å velge mellom.

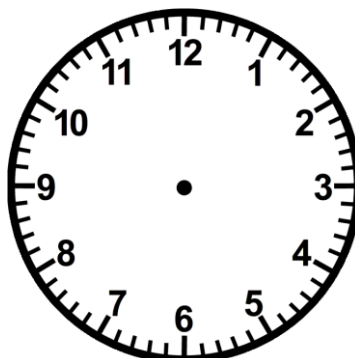
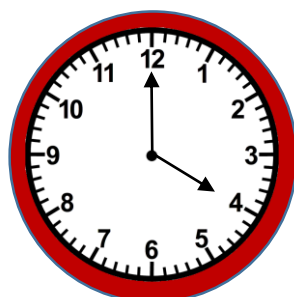
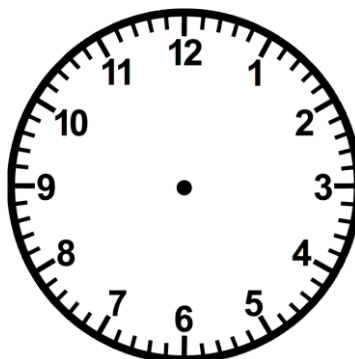
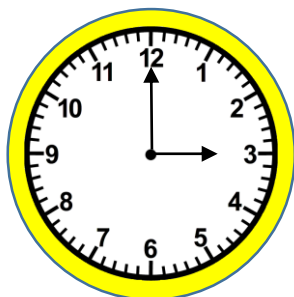
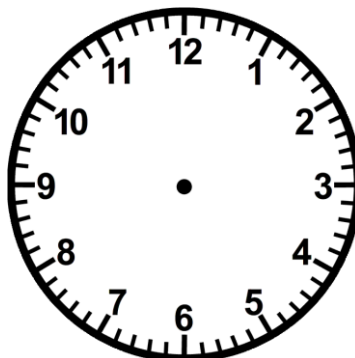
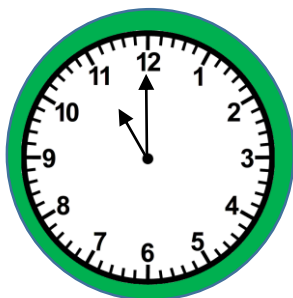
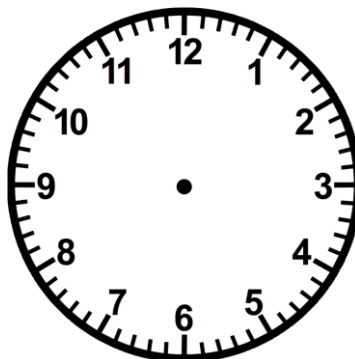
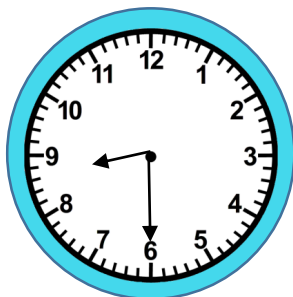
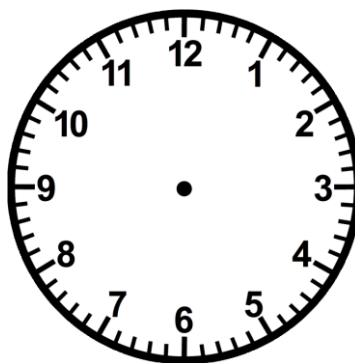
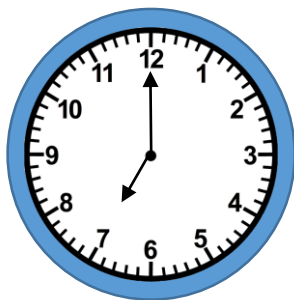
Dagens program	
Kl. 16:30	Frost 2
Kl. 17:00	Knerten
Kl. 18:00	Lotte og dragejakten
Kl. 18.20	Paw Patrol
Kl. 19:00	Mormor og de 8 ungene
Kl. 19:15	Elleville Elfrid

Sett inn riktig film ved klokkeslettet

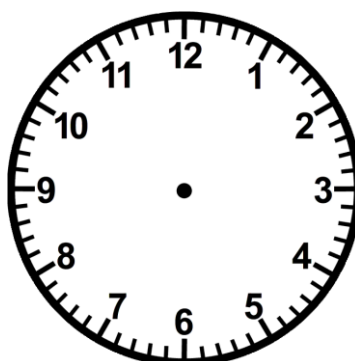
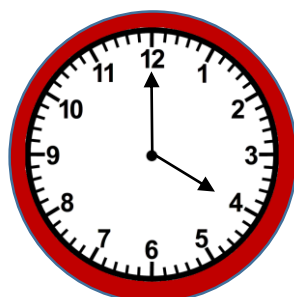
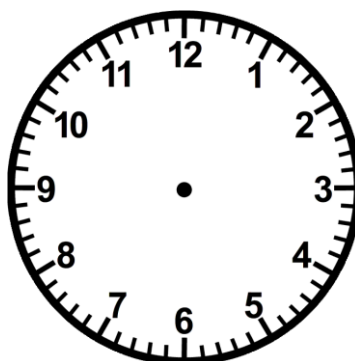
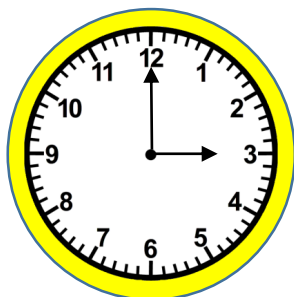
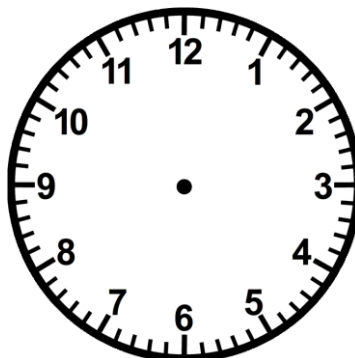
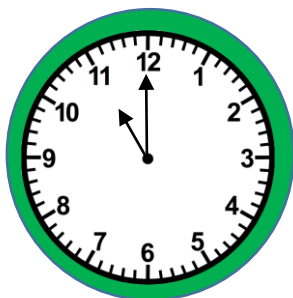
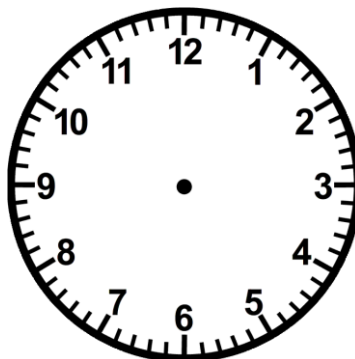
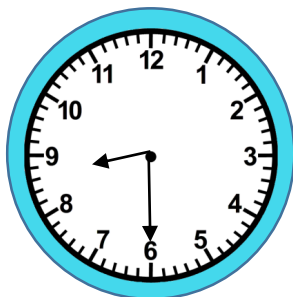
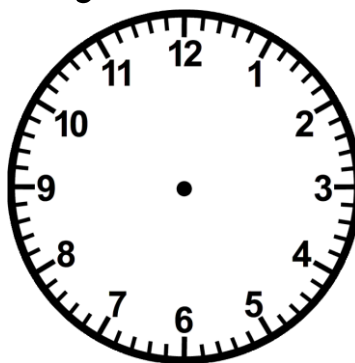
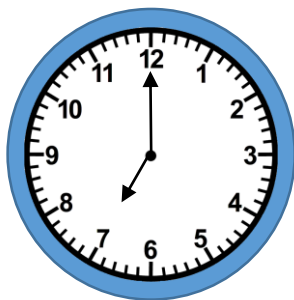


Håkon velger nest siste film. Hvilken film er det?

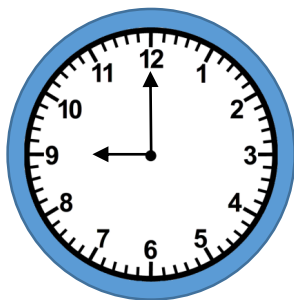
Tegn inn klokkeslettet 4 timer etter



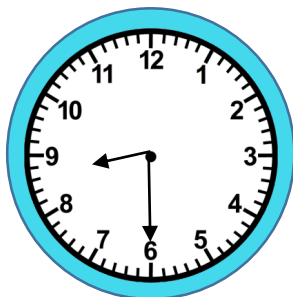
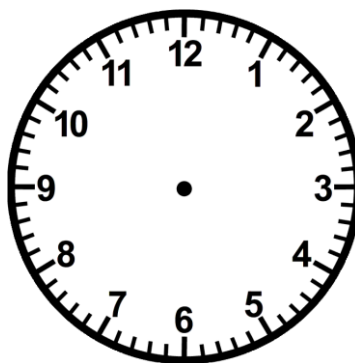
Tegn inn klokkeslettet 2 timer før



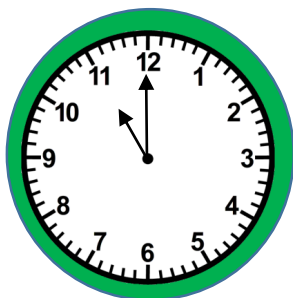
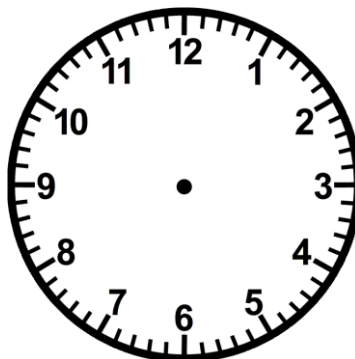
Tegn inn viserne



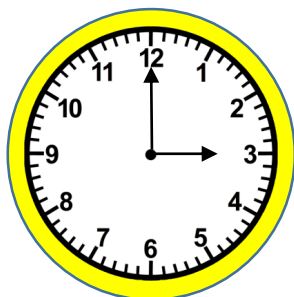
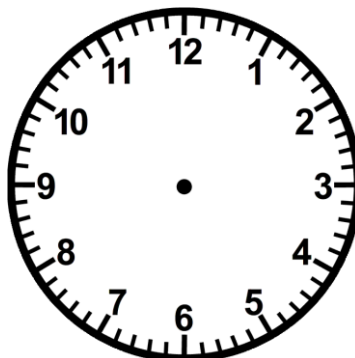
3 timer senere



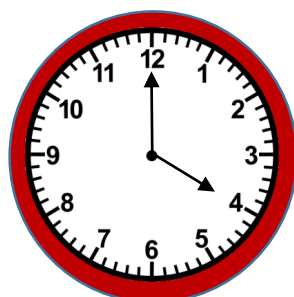
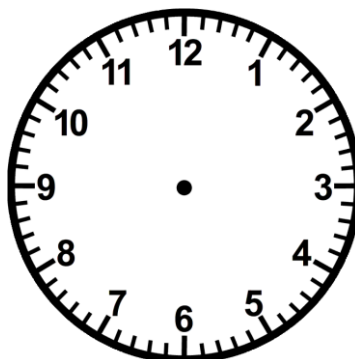
4 timer senere



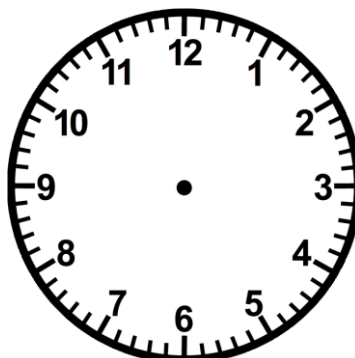
5 timer senere



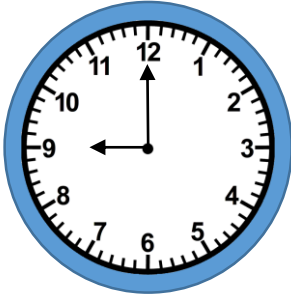
7 timer senere



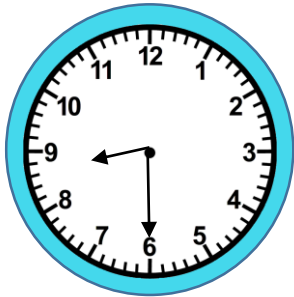
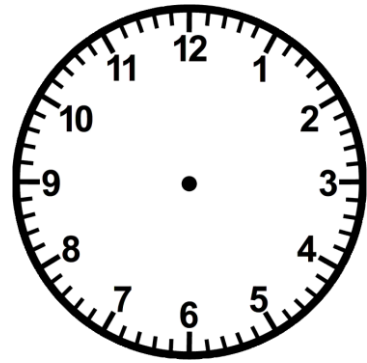
10 timer senere



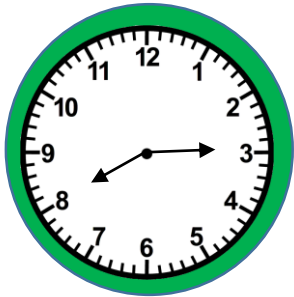
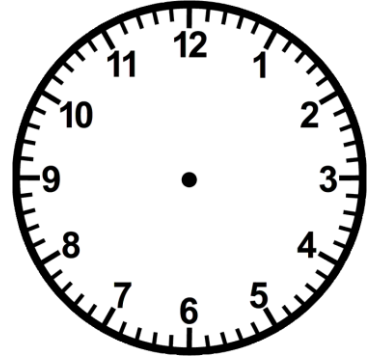
Tegn inn viserne



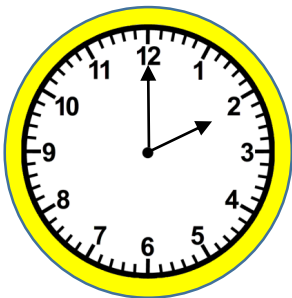
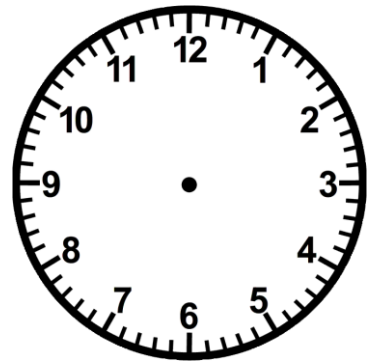
3 timer tidligere



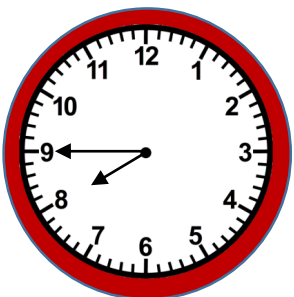
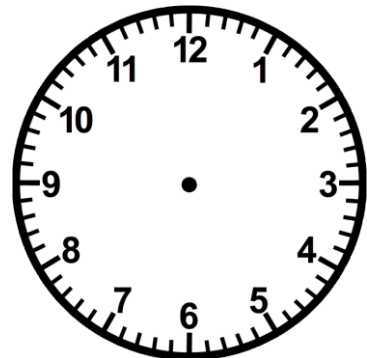
4 timer tidligere



6 timer tidligere



5 timer tidligere



2 timer tidligere

