

# Sommerfugl tellekort

## Forarbeid:

Print ut kortene på litt tykt papir, klipp ut og laminér dem.

## Fremgangsmåte:

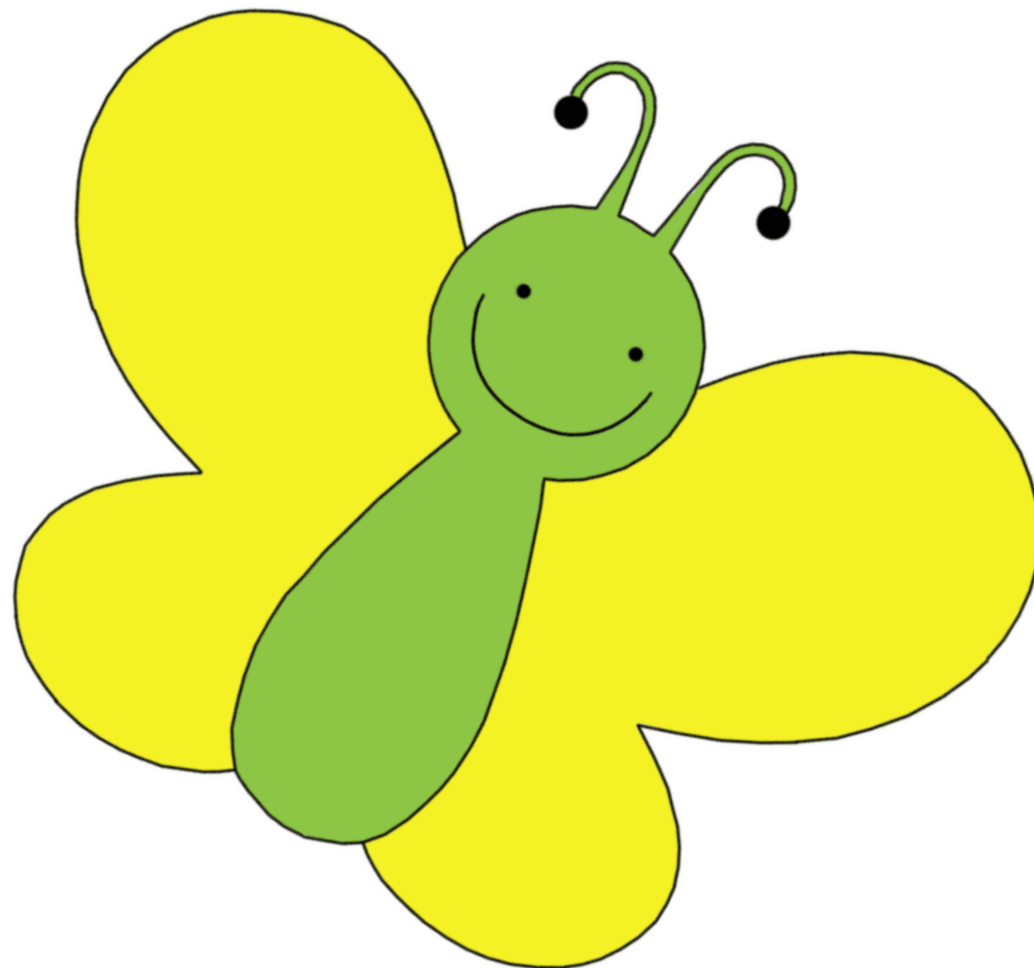
I begynneropplæringen skal elevene finne ut hvilket mengdekort som hører sammen med tallkortet.

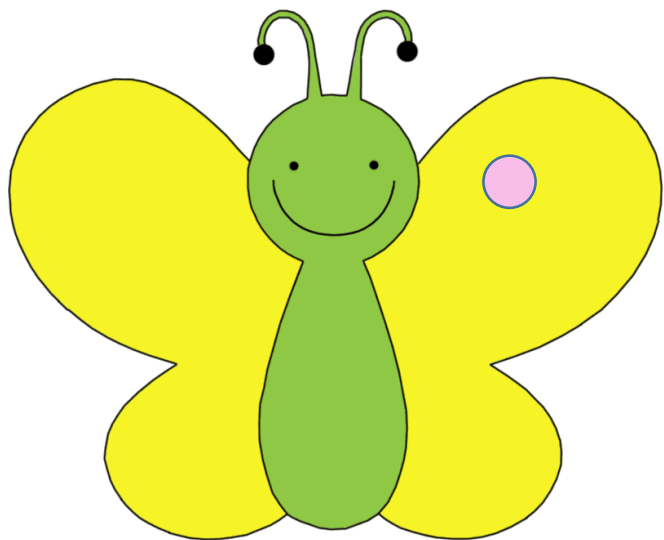
## SPILL:

Legg alle kortene på bordet med billedsiden ned. Startspilleren snur to kort og sjekker om de er like. Hvis ikke snus kortene og legges tilbake i bunken. Er de like legges kortene til side som et «stikk». Den av elevene som har flest «stikk» vinner.

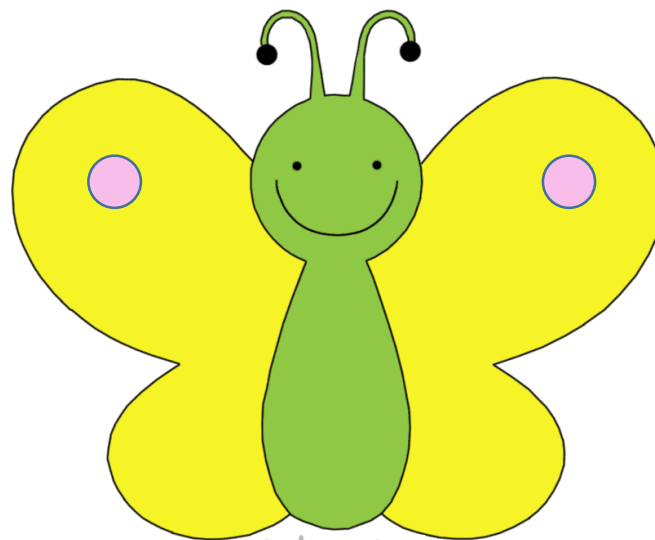
Lykke til!

Hilsen **Spire Gro**





Spire Gro



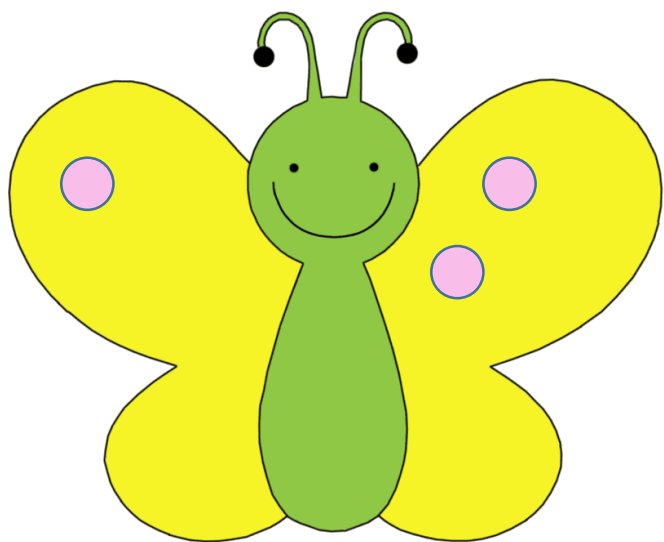
Spire Gro

1

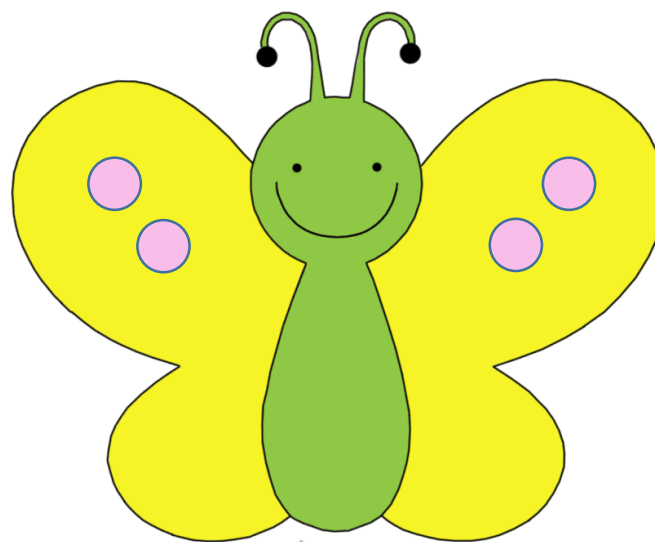
Spire Gro

2

Spire Gro



Spire Gro



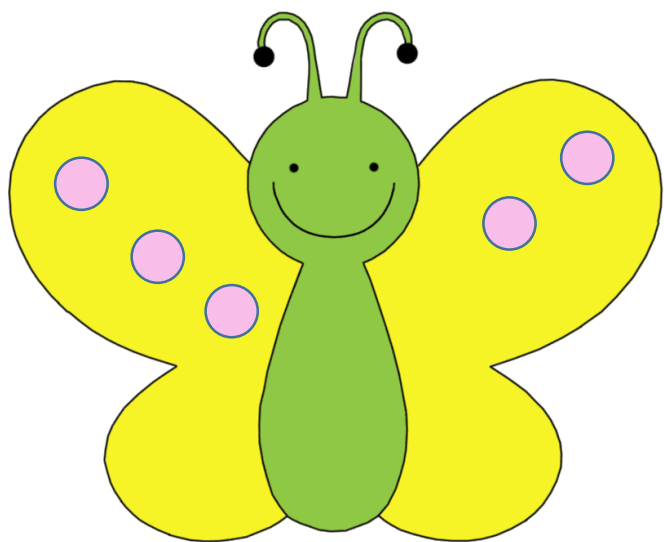
Spire Gro

3

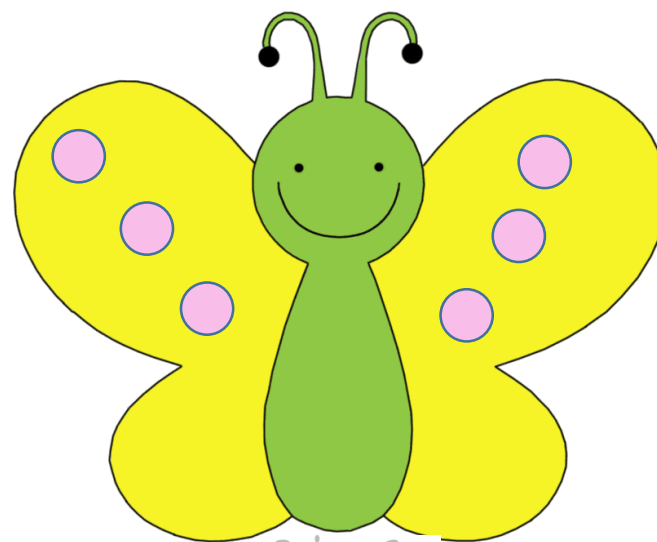
Spire Gro

4

Spire Gro



Spire Gro



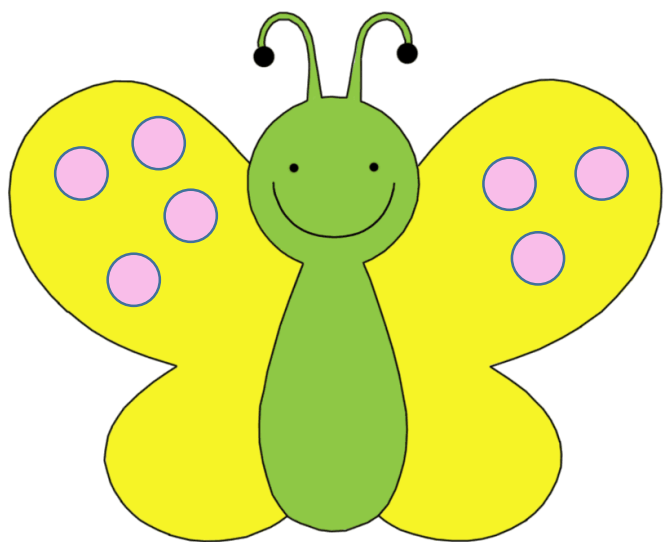
Spire Gro

5

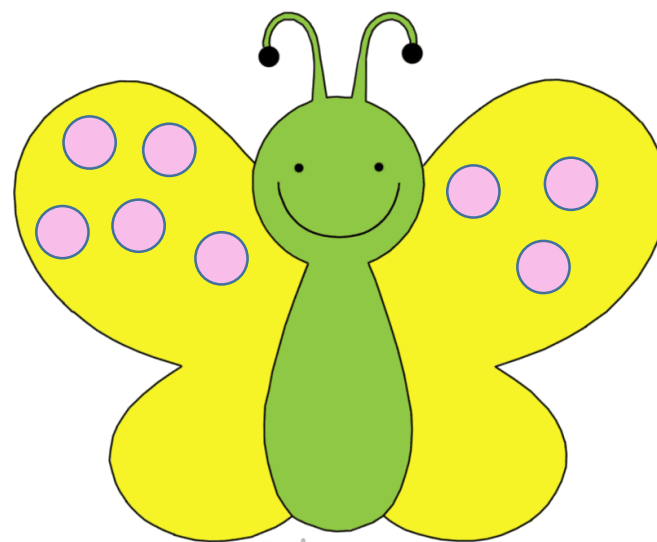
Spire Gro

6

Spire Gro



Spire Gro



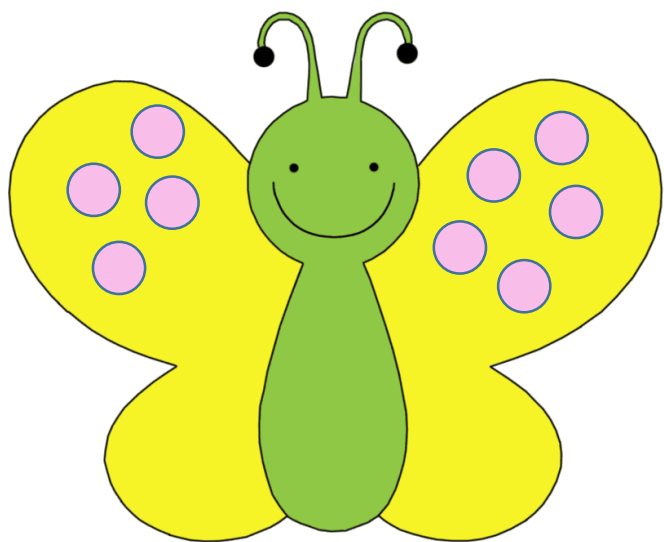
Spire Gro

7

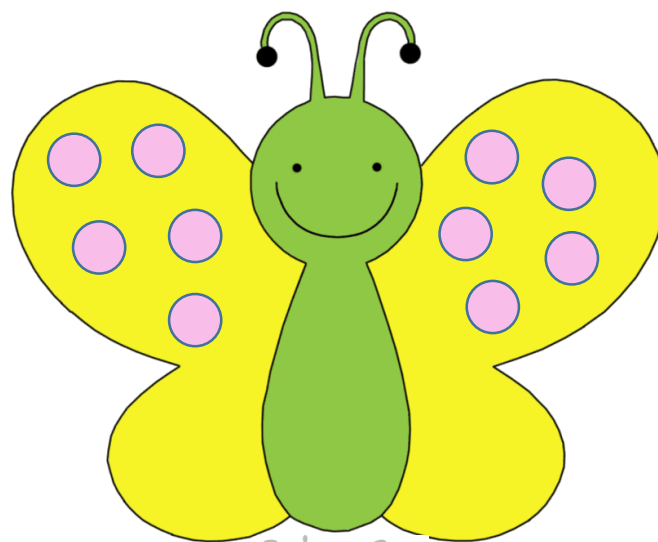
Spire Gro

8

Spire Gro



Spire Gro



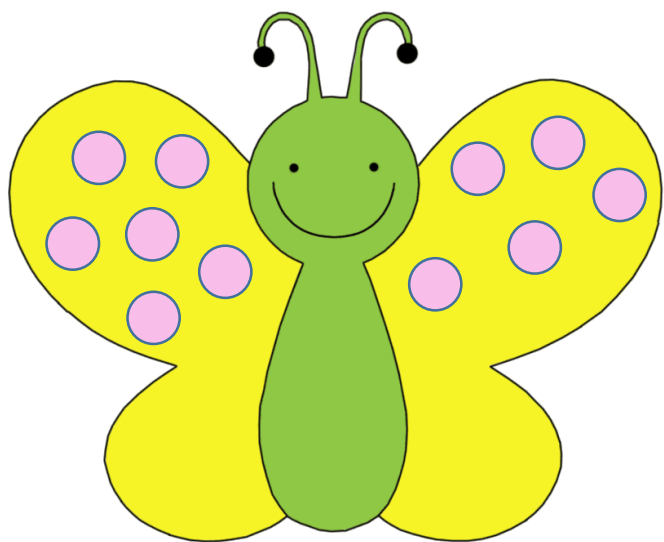
Spire Gro

9

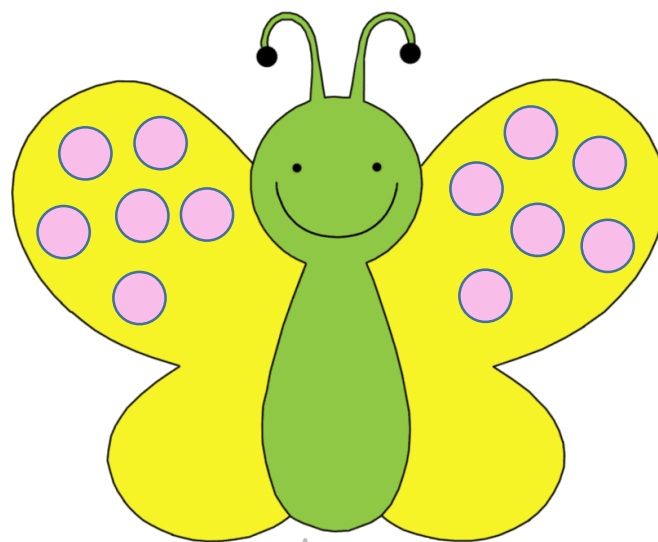
Spire Gro

10

Spire Gro



Spire Gro



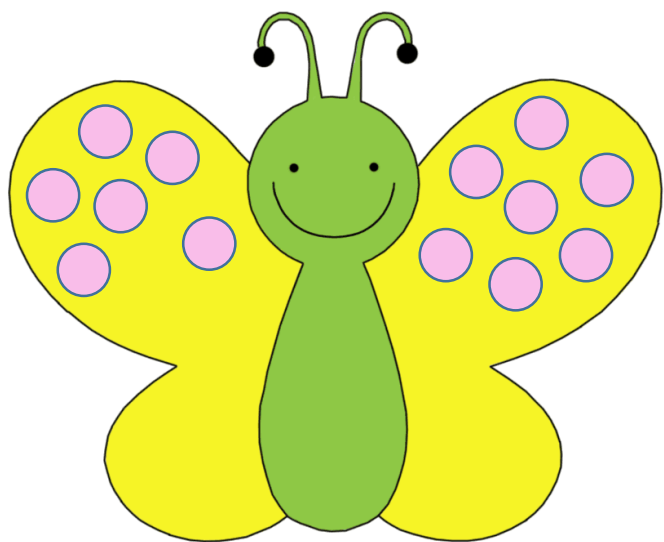
Spire Gro

11

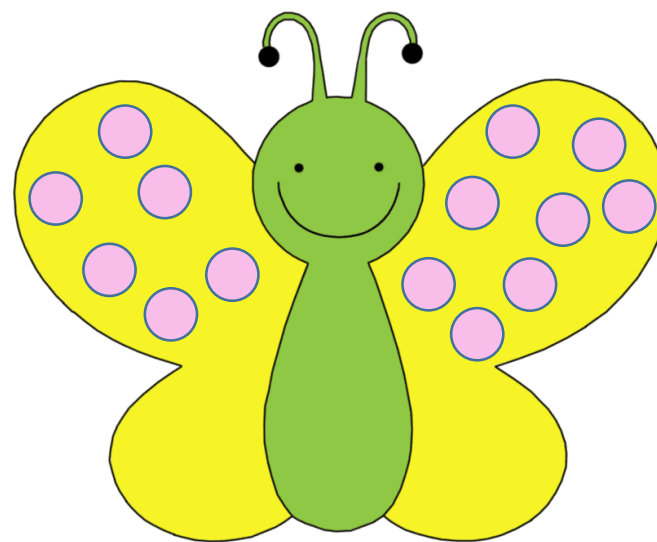
Spire Gro

12

Spire Gro



Spire Gro



Spire Gro

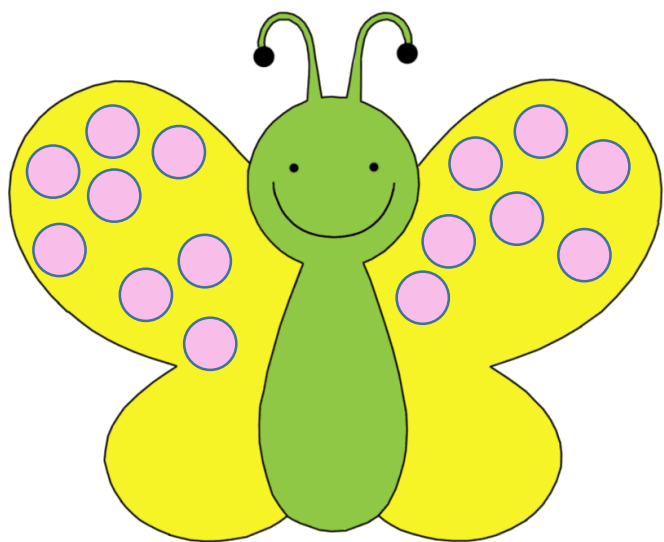
13

Spire Gro

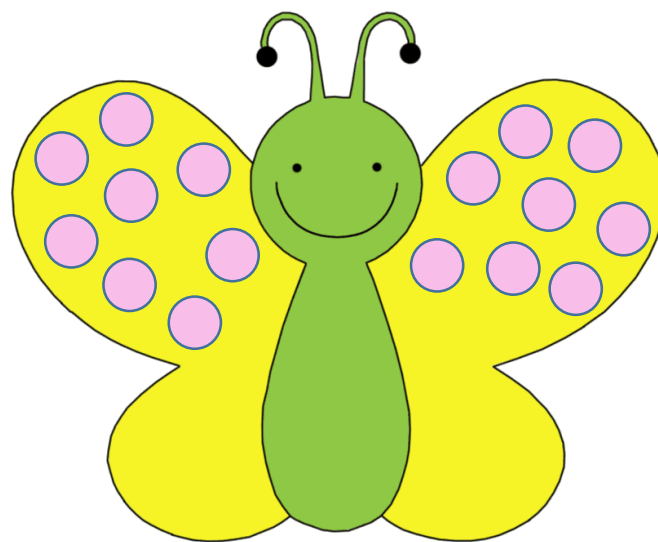
14

Spire Gro





Spire Gro



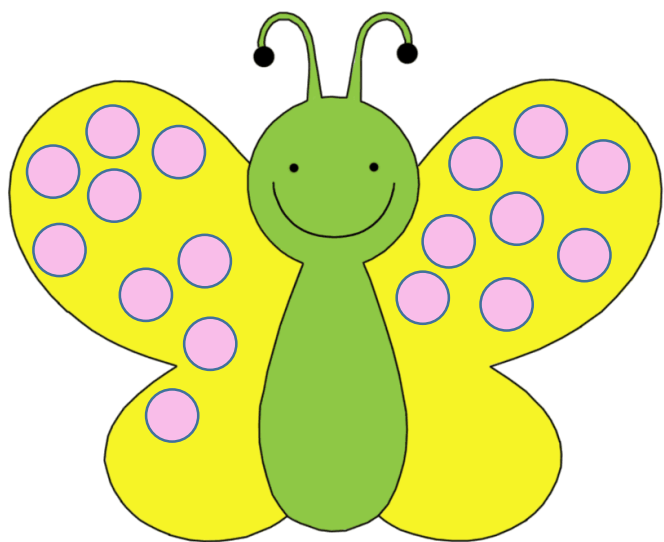
Spire Gro

15

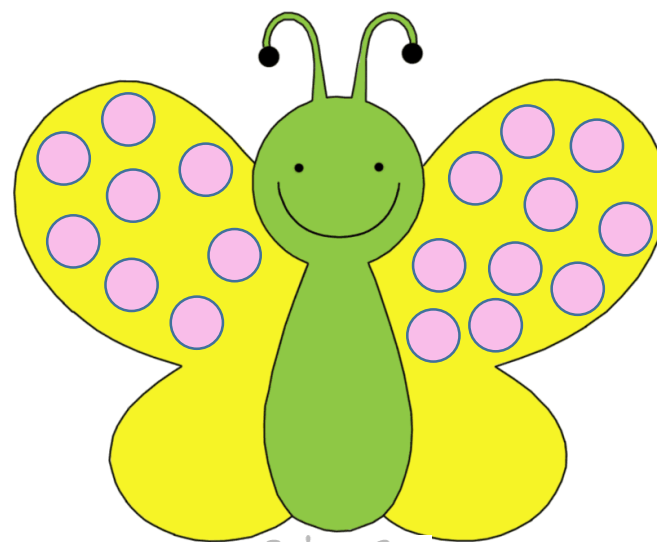
Spire Gro

16

Spire Gro



Spire Gro



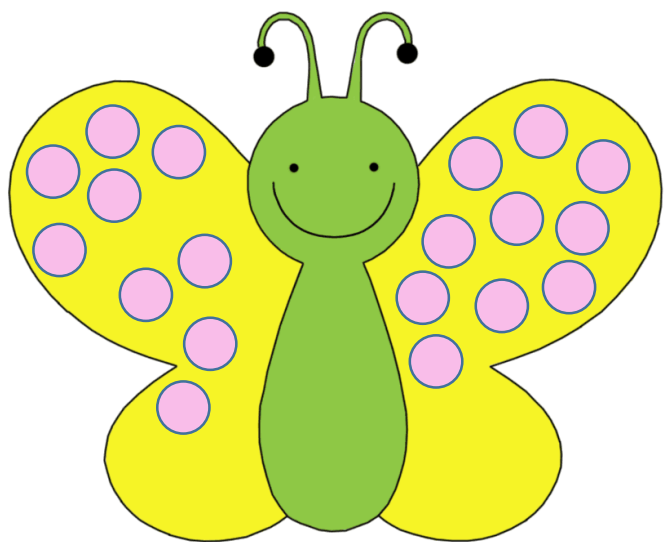
Spire Gro

17

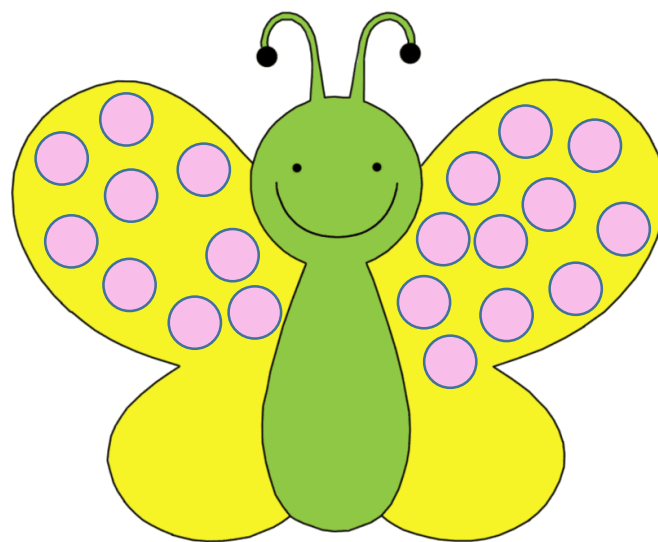
Spire Gro

18

Spire Gro



Spire Gro



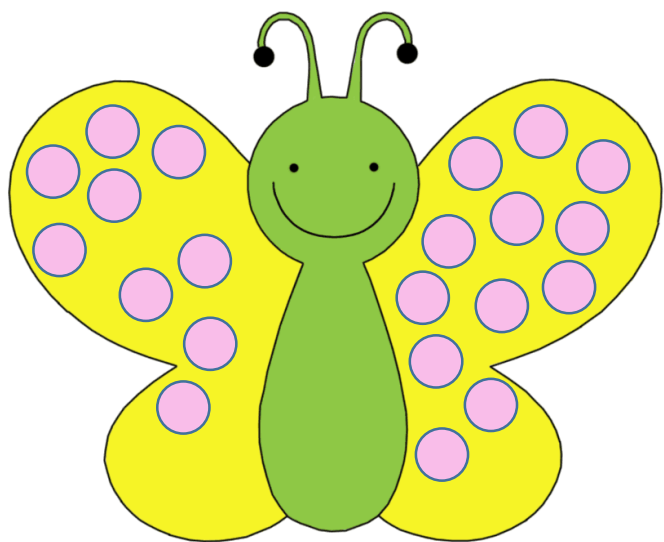
Spire Gro

19

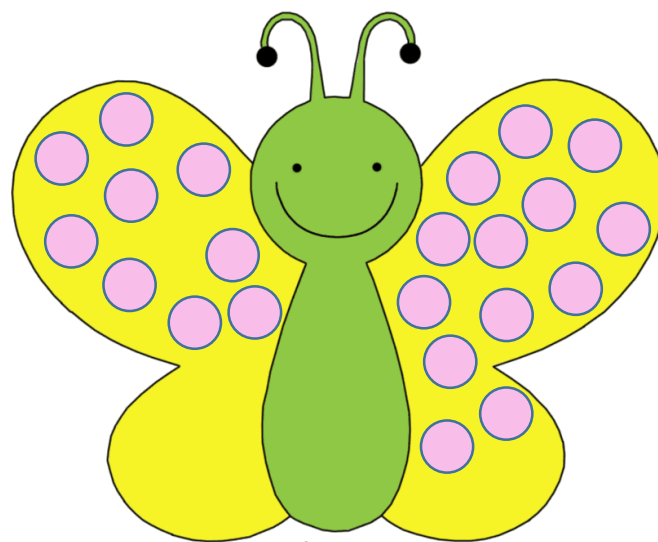
Spire Gro

20

Spire Gro



Spire Gro



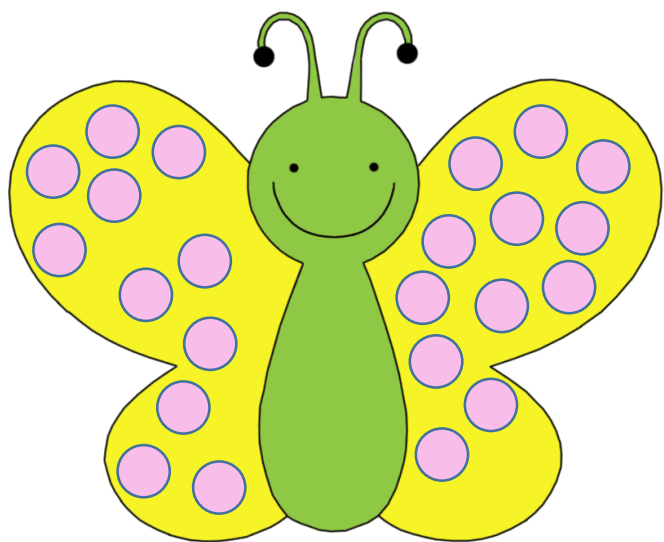
Spire Gro

21

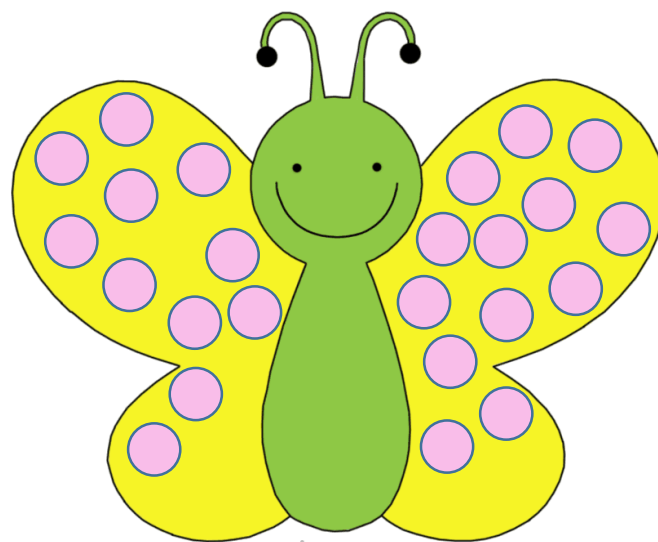
Spire Gro

22

Spire Gro



Spire Gro



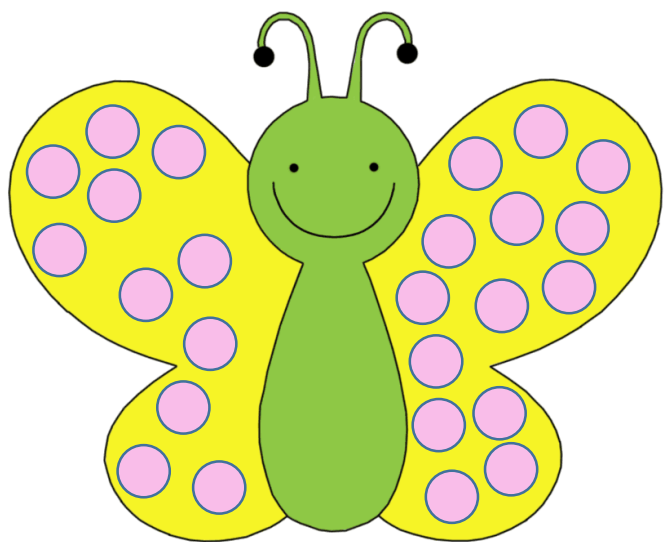
Spire Gro

23

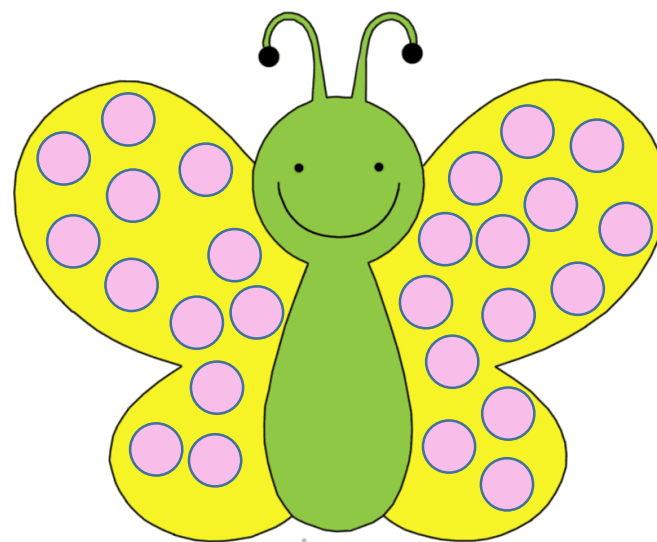
Spire Gro

24

Spire Gro



Spire Gro



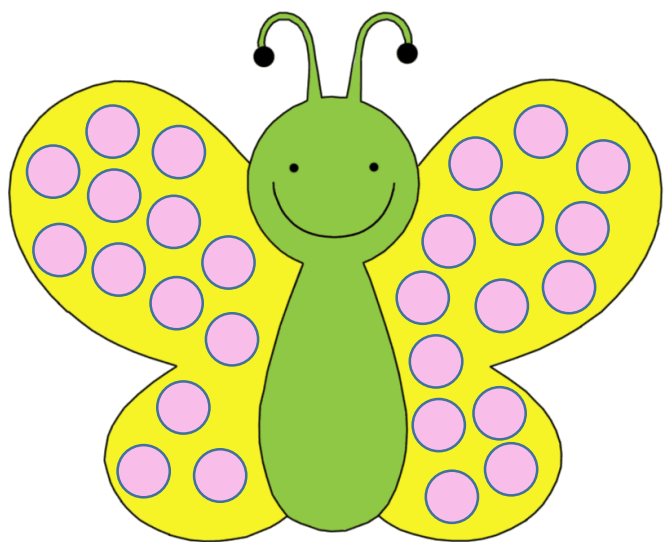
Spire Gro

25

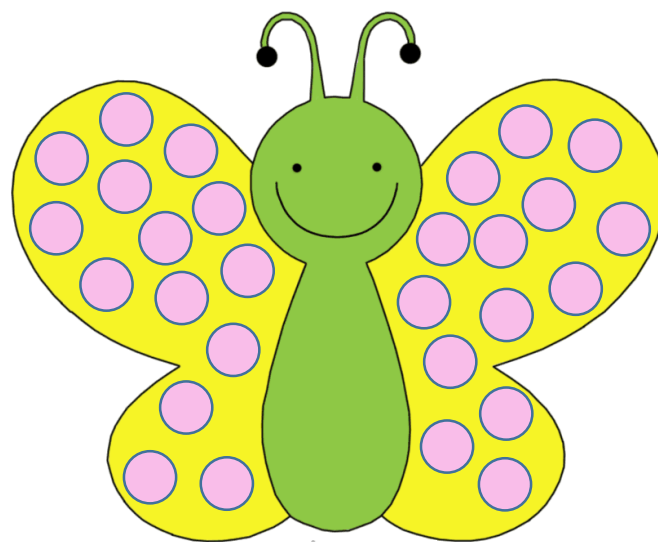
Spire Gro

26

Spire Gro



Spire Gro



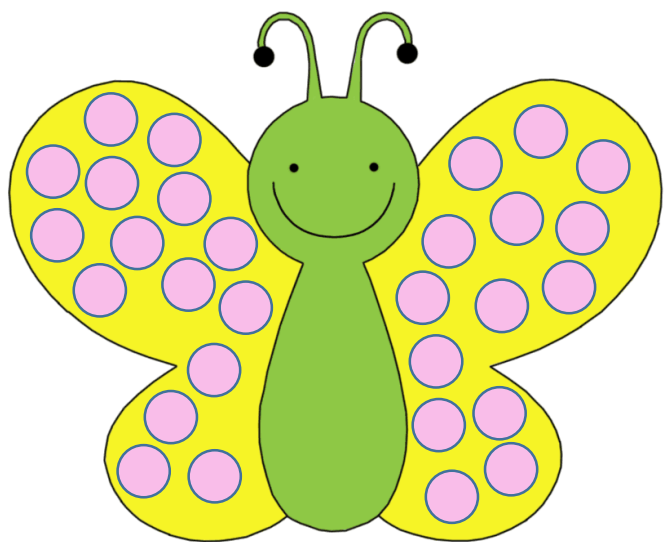
Spire Gro

27

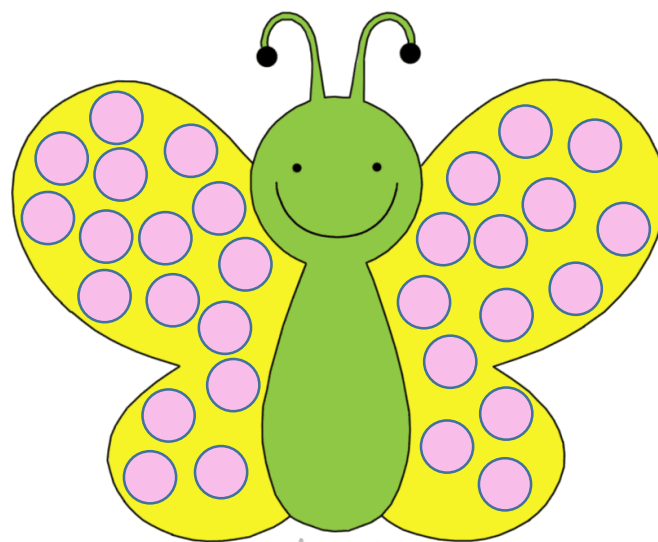
Spire Gro

28

Spire Gro



Spire Gro



Spire Gro

29

Spire Gro

30

Spire Gro