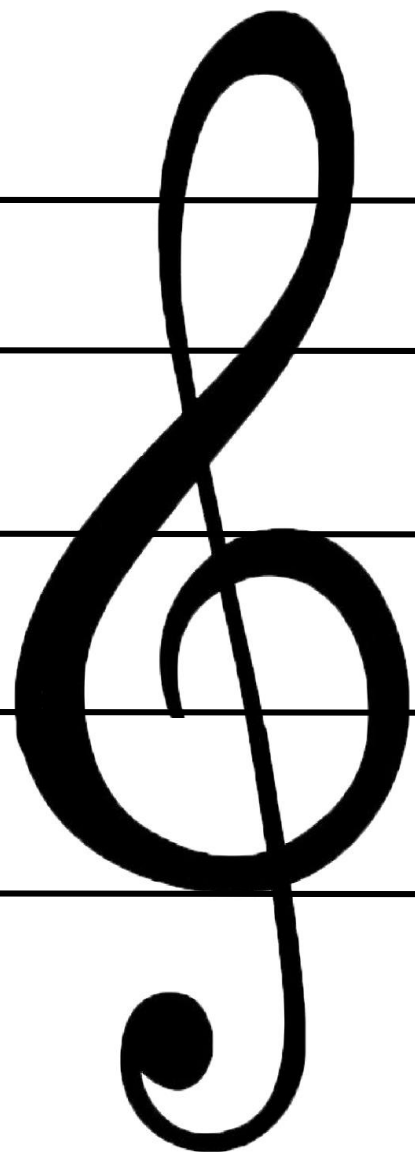


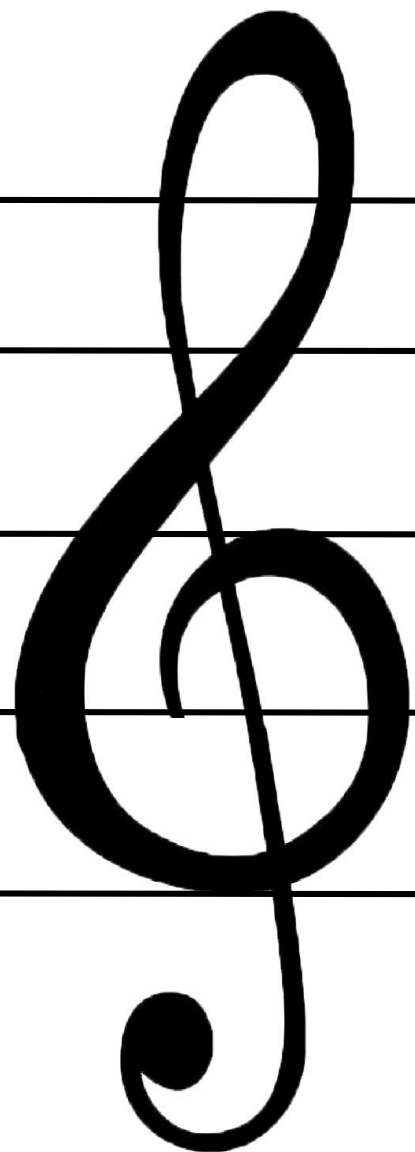
# **VI LÆRER NOTER og komponerer selv**

1.time

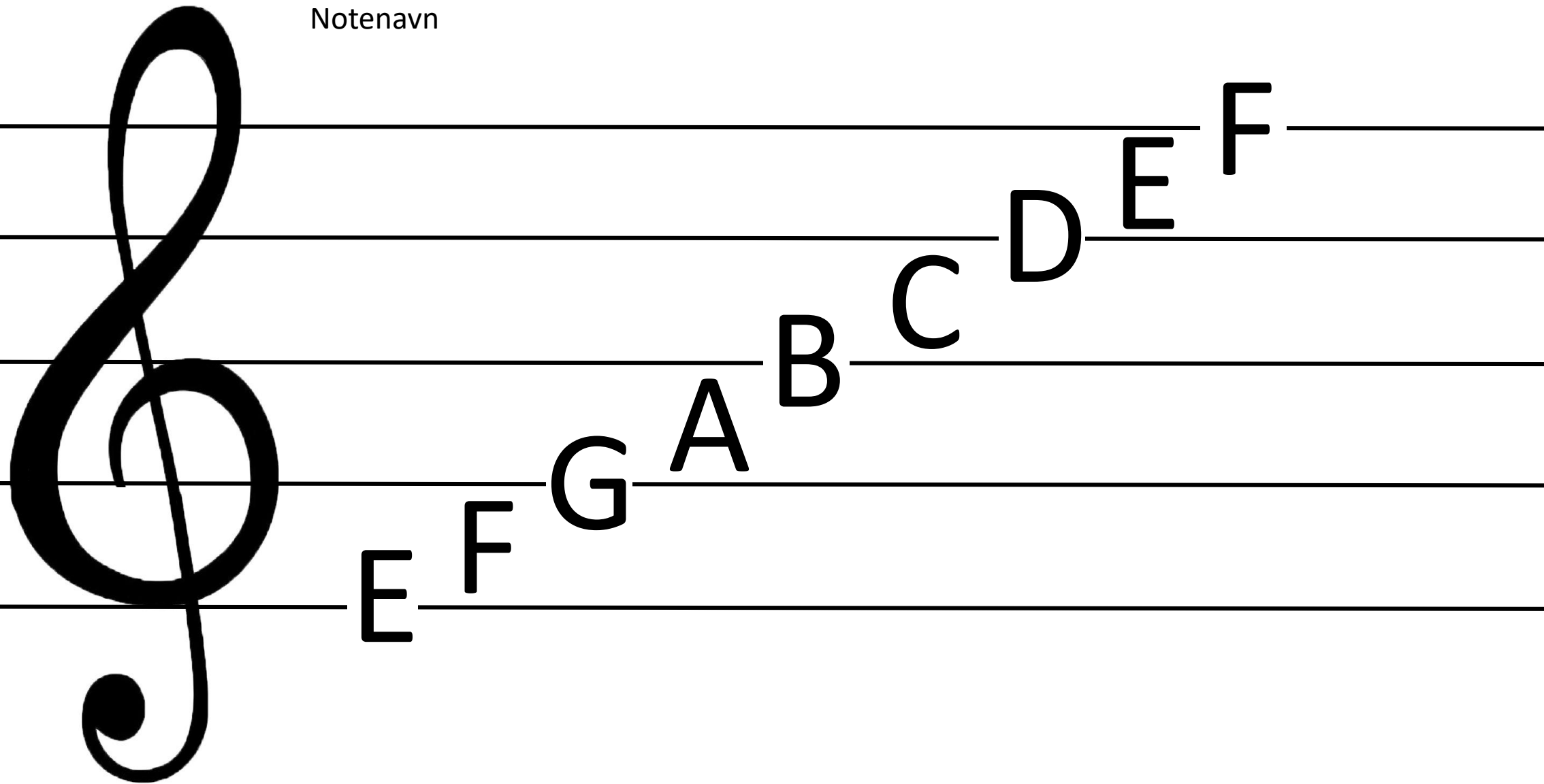
Øvd deg på å tegne en g-nøkkel



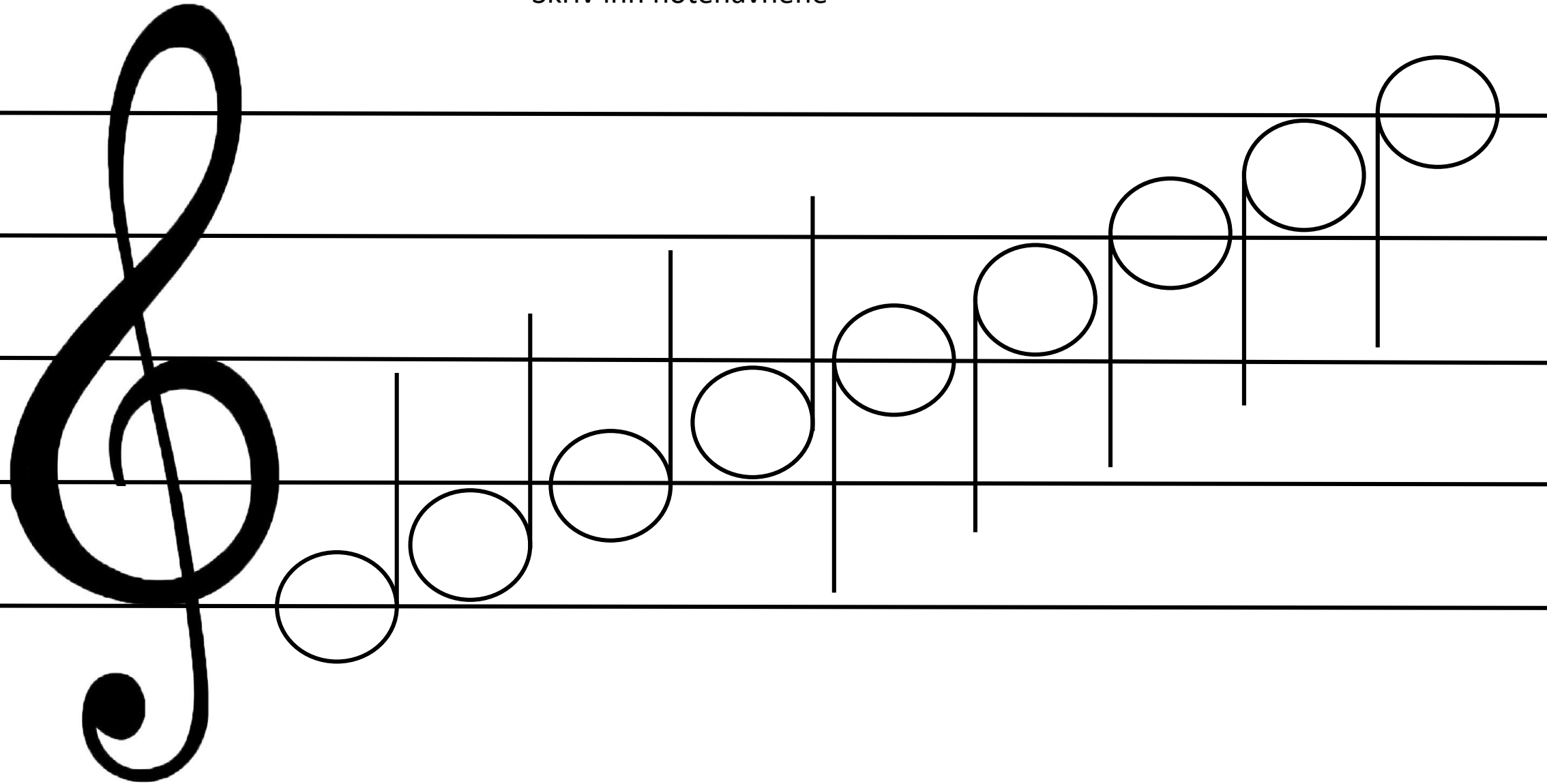
Øvd deg på å tegne en g-nøkkel



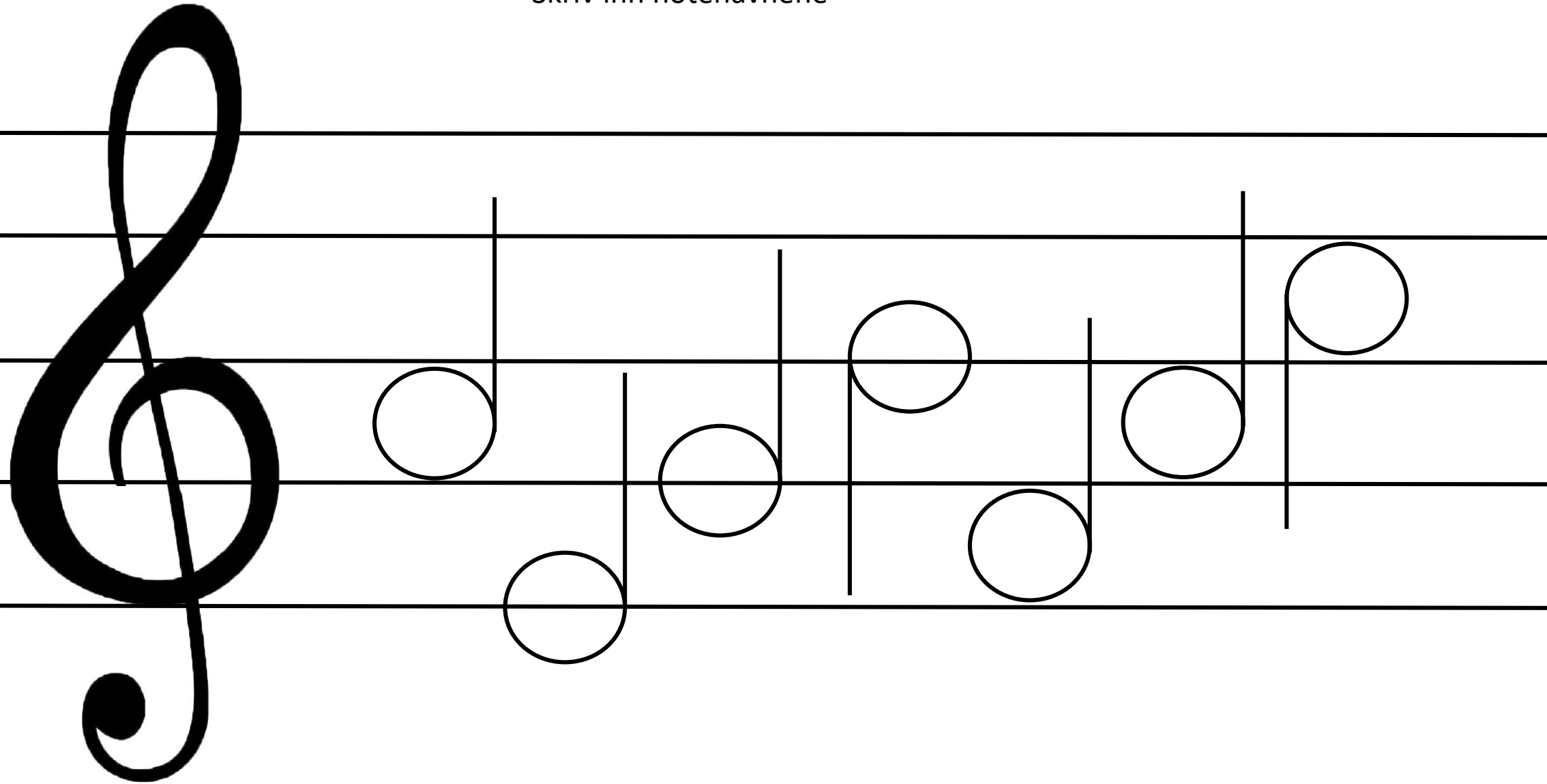
Notenavn



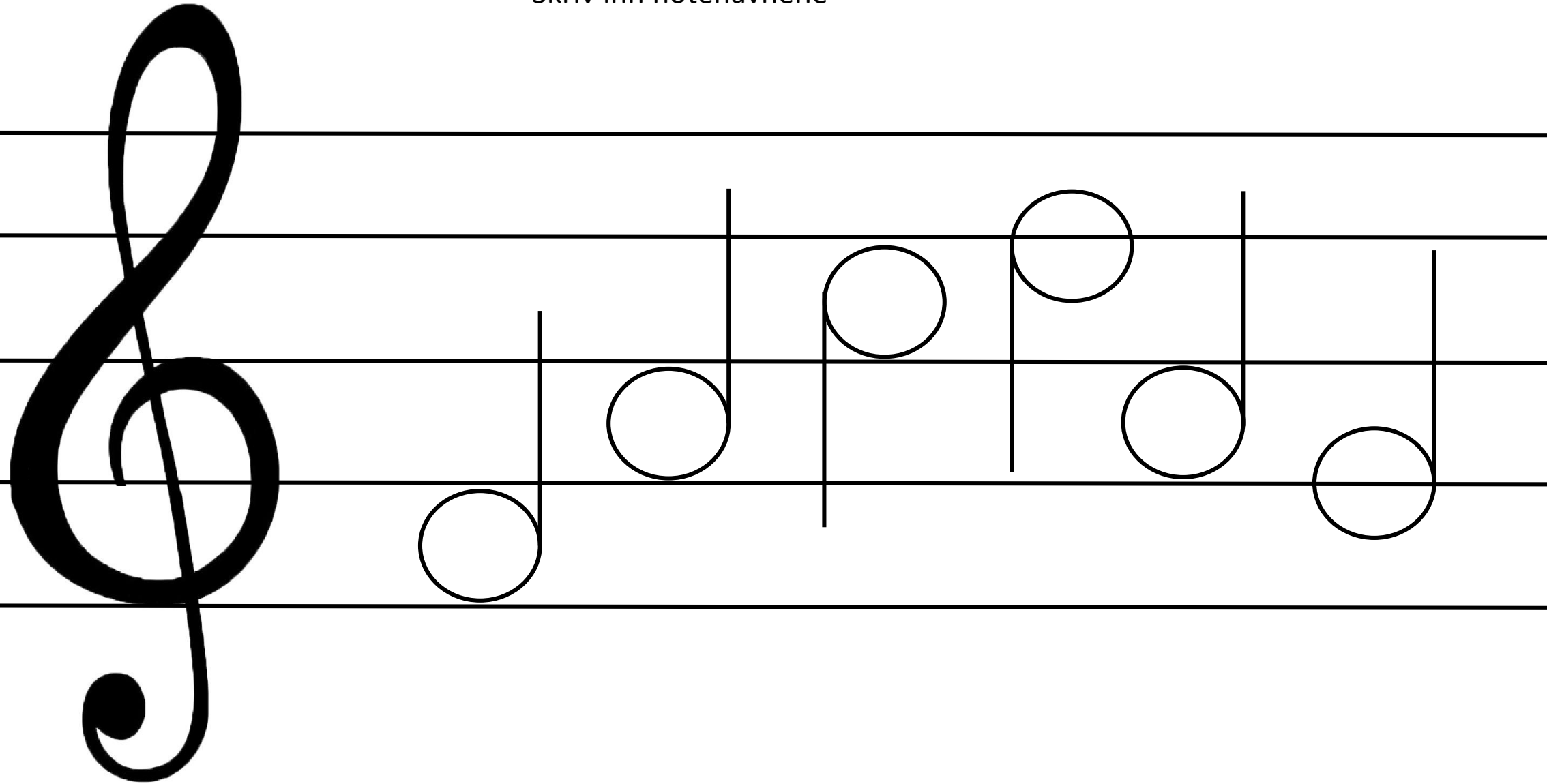
Skriv inn notenavnene



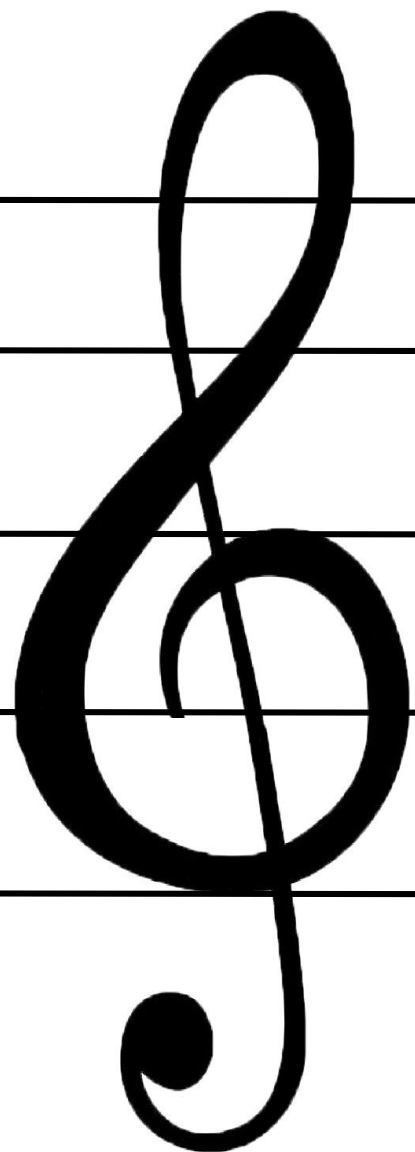
Skriv inn notenavnene



Skriv inn notenavnene

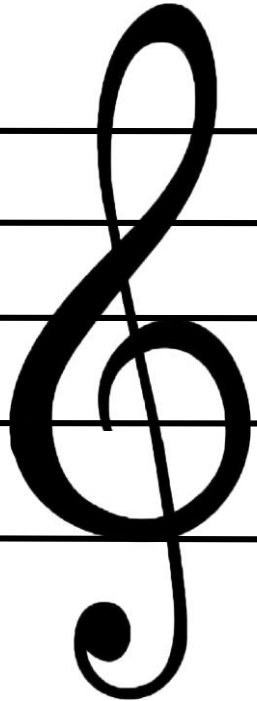
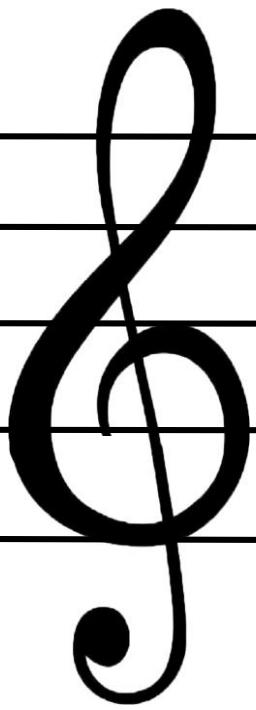


Sett inn dine egne noter med korker

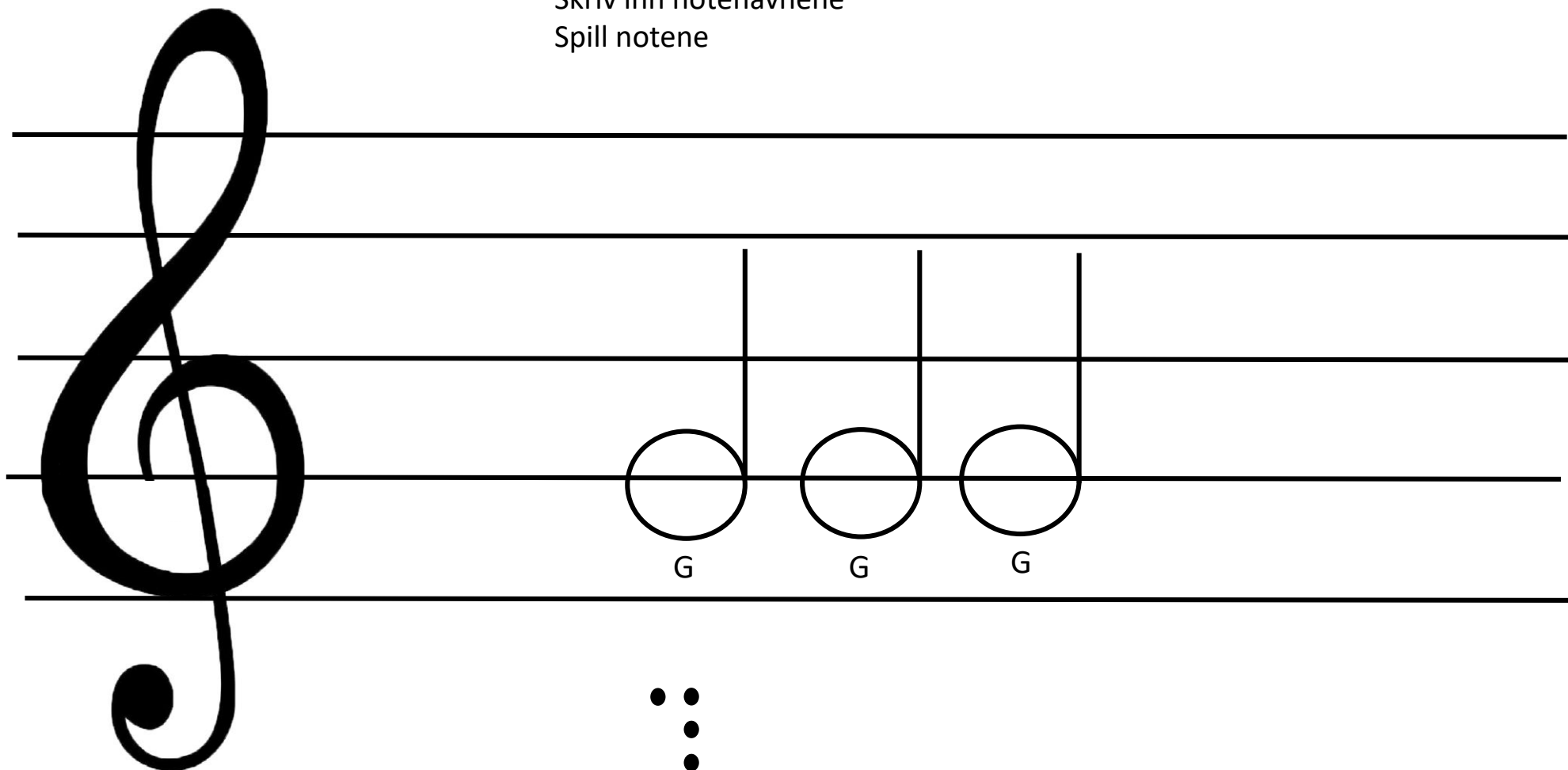




Tegn inn dine egne noter



Skriv inn notenavnene  
Spill notene



A musical staff with a treble clef. Three whole notes are placed on the second line of the staff. Each note is a circle with a vertical stem extending upwards to the third line. Below each note is the letter 'G'. Below the first 'G' is a vertical ellipsis consisting of three dots.

Skriv inn notenavnene  
Spill notene

